

CSE SEMI-CONDUCTOR/MICRO-ELECTRONICS

CSE developed our semiconductor, vacuum pipe fitting and components step by step by means of good produce techniques experience of sanitary pipe fitting and valve.

Our Vacuum and semiconductor fitting include:

Clamp-Aluminum and Stainless steel and claw clamp are available. Flange-KF, ISO specification.

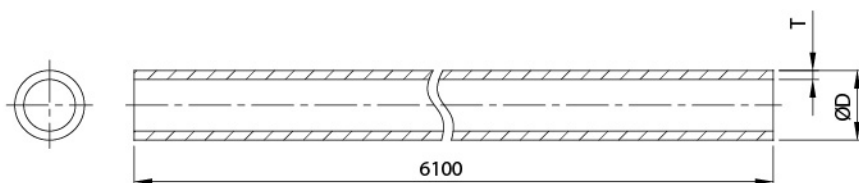
Reducer-Blank flange and all of Elbow, Tee, Reducer. $Ra \leq 0.4\mu m$ by machine and polished can be provided on requested.

We also can offer Electro-polished and blasted surfaces.

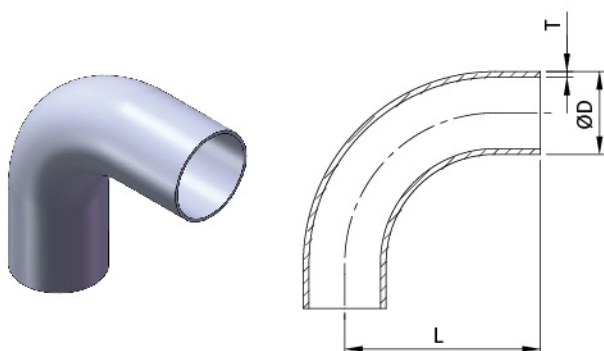
So far our products have been successful promoted to Germany, U.K, Japan and local building projects base on our flexible produce ability and strict control.



Vacuum Components (A size)



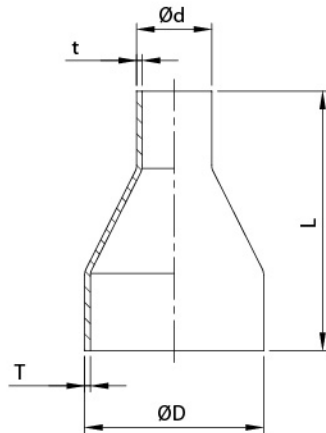
SIZE	ØD	T
6A	1/8"	10.5
8A	1/4"	13.8
10A	3/8"	17.3
15A	1/2"	21.7
20A	3/4"	27.2
25A	1.0"	34
32A	1.25"	42.7
40A	1.5"	48.6
50A	2.0"	60.5
65A	2.5"	76.3
80A	3.0"	89.1
90A	3.5"	101.6
100A	4.0"	114.3



SCF 90° ELBOW

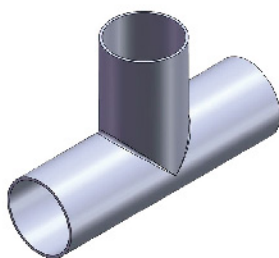
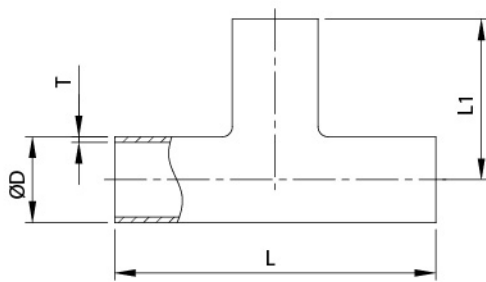
SIZE	ØD	L	T
10A	17.3	60	1.2
15A	21.7	65	1.65
20A	27.2	70	1.65
25A	34	75	1.65
32A	42.7	90	1.65
40A	48.6	104	1.65
50A	60.5	123	1.65
65A	76.3	115	2.1
80A	89.1	128	2.1
100A	114.3	153	2.1

Vacuum Components (A size)



SCF CONCENTRIC REDUCER

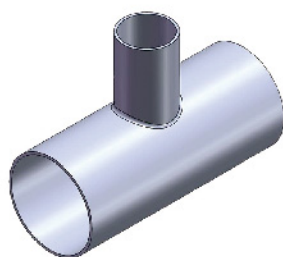
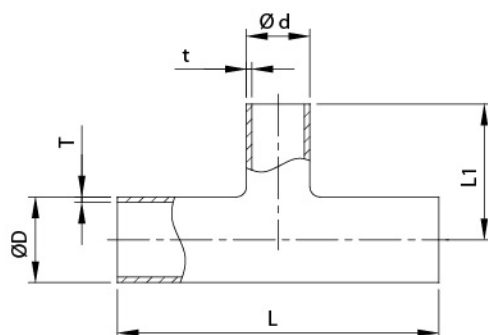
SIZE	ØD	Ød	L	T	t
20A*15A	27.2	21.7	120	1.65	1.65
25A*15A	34	21.7	125	1.65	1.65
25A*20A	34	27.2	125	1.65	1.65
32A*15A	42.7	21.7	139	1.65	1.65
32A*20A	42.7	27.2	139	1.65	1.65
32A*25A	42.7	34	139	1.65	1.65
40A*20A	48.6	27.2	152	1.65	1.65
40A*25A	48.6	34	152	1.65	1.65
40A*32A	48.6	42.7	162	1.65	1.65
50A*20A	60.5	27.2	164	1.65	1.65
50A*25A	60.5	34	164	1.65	1.65
50A*32A	60.5	42.7	174	1.65	1.65
50A*40A	60.5	48.6	174	1.65	1.65
65A*32A	76.3	42.7	192	2.1	1.65
65A*40A	76.3	48.6	192	2.1	1.65
65A*50A	76.3	60.5	192	2.1	1.65
80A*32A	89.1	42.7	192	2.1	1.65
80A*40A	89.1	48.6	192	2.1	1.65
80A*50A	89.1	60.5	192	2.1	1.65
80A*65A	89.1	76.3	197	2.1	2.1
100A*40A	114.3	48.6	205	2.1	1.65
100A*50A	114.3	60.5	205	2.1	1.65
100A*65A	114.3	76.3	210	2.1	2.1
100A*80A	114.3	89.1	210	2.1	2.1



SCF EQUAL WELD TEE

SIZE	ØD	L	L1	T
10A	17.3	100	50	1.2
15A	21.7	110	55	1.65
20A	27.2	110	55	1.65
25A	34	120	60	1.65
32A	42.7	150	75	1.65
40A	48.6	160	80	1.65
50A	60.5	170	85	1.65
65A	76.3	200	100	2.1
80A	89.1	210	105	2.1
100A	114.3	240	120	2.1

Vacuum Components (A size)

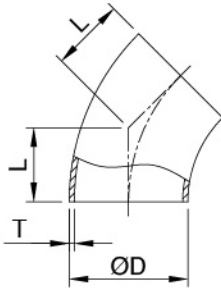


SCF REDUCING TEE

SIZE	ØD	Ød	L	L1	T	t
20A*15A	27.2	21.7	110	55	1.65	1.65
25A*15A	34	21.7	120	60	1.65	1.65
25A*20A	34	27.2	120	60	1.65	1.65
32A*15A	42.7	21.7	140	70	1.65	1.65
32A*20A	42.7	27.2	140	70	1.65	1.65
32A*25A	42.7	34	140	70	1.65	1.65
40A*15A	48.6	21.7	140	70	1.65	1.65
40A*20A	48.6	27.2	140	70	1.65	1.65
40A*25A	48.6	34	140	70	1.65	1.65
40A*32A	48.6	42.7	160	80	1.65	1.65
50A*15A	60.5	21.7	140	75	1.65	1.65
50A*20A	60.5	27.2	140	75	1.65	1.65
50A*25A	60.5	34	140	75	1.65	1.65
50A*32A	60.5	42.7	160	85	1.65	1.65
50A*40A	60.5	48.6	160	85	1.65	1.65
65A*15A	76.3	21.7	150	85	2.1	1.65
65A*20A	76.3	27.2	150	85	2.1	1.65
65A*25A	76.3	34	150	85	2.1	1.65
65A*32A	76.3	42.7	180	95	2.1	1.65
65A*40A	76.3	48.6	180	95	2.1	1.65
65A*50A	76.3	60.5	180	95	2.1	1.65
80A*15A	89.1	21.7	150	90	2.1	1.65
80A*20A	89.1	27.2	150	90	2.1	1.65
80A*25A	89.1	34	150	90	2.1	1.65
80A*32A	89.1	42.7	180	100	2.1	1.65
80A*40A	89.1	48.6	180	100	2.1	1.65
80A*50A	89.1	60.5	180	100	2.1	1.65
80A*65A	89.1	76.3	200	105	2.1	2.1
100A*15A	114.3	21.7	150	100	2.1	1.65
100A*20A	114.3	27.2	150	100	2.1	1.65
100A*25A	114.3	34	150	100	2.1	1.65
100A*32A	114.3	42.7	180	110	2.1	1.65
100A*40A	114.3	48.6	180	110	2.1	1.65
100A*50A	114.3	60.5	180	110	2.1	1.65
100A*65A	114.3	76.3	210	120	2.1	2.1
100A*80A	114.3	89.1	210	120	2.1	2.1

Vacuum Components (USA type)

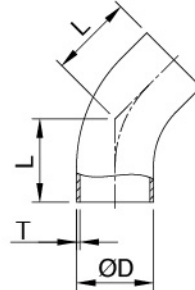
45° Short Elbow



45° Elbow

SIZE	ØD	L	T
1.0"	25.4	15.8	1.65
1.5"	38.1	23.8	1.65
2.0"	50.8	31.75	1.65
2.5"	63.5	39.6	1.65
3.0"	76.2	47.6	1.65
4.0"	101.6	63.5	2.1

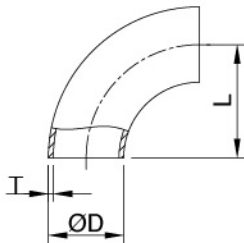
45° Long Elbow



45° Elbow

SIZE	ØD	L	T
1.0"	25.4	30.2	1.65
1.5"	38.1	41.3	1.65
2.0"	50.8	58.7	1.65
2.5"	63.5	76.2	1.65
3.0"	76.2	93.7	1.65
4.0"	101.6	122.2	2.1

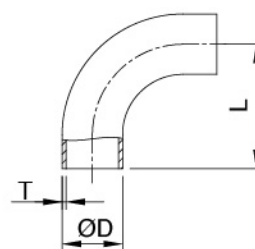
90° Short Elbow



90° Bend

SIZE	ØD	L	T
1.0"	25.4	38.1	1.65
1.5"	38.1	57.2	1.65
2.0"	50.8	76.2	1.65
2.5"	63.5	95.25	1.65
3.0"	76.2	114.3	1.65
4.0"	101.6	152.4	2.1

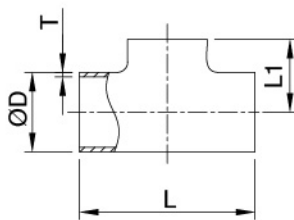
90° Long Elbow



90° Bend

SIZE	ØD	L	T
1.0"	25.4	52.4	1.65
1.5"	38.1	74.6	1.65
2.0"	50.8	103.2	1.65
2.5"	63.5	131.8	1.65
3.0"	76.2	160.3	1.65
4.0"	101.6	211.1	2.1

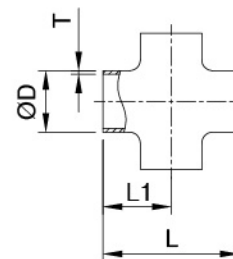
Welding Tee



Tee

SIZE	ØD	L	L1	T
1.0"	25.4	95.2	47.6	1.65
1.5"	38.1	114.4	57.2	1.65
2.0"	50.8	152.4	76.2	1.65
2.5"	63.5	152.4	76.2	1.65
3.0"	76.2	165.2	82.6	1.65
4.0"	101.6	196.8	98.4	2.1

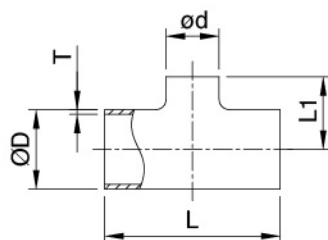
Cross



Cross

SIZE	ØD	L	L1	T
1.0"	25.4	95.2	47.6	1.65
1.5"	38.1	114.4	57.2	1.65
2.0"	50.8	152.4	76.2	1.65
2.5"	63.5	152.4	76.2	1.65
3.0"	76.2	165.2	82.6	1.65
4.0"	101.6	196.8	98.4	2.1

Reducing Tee

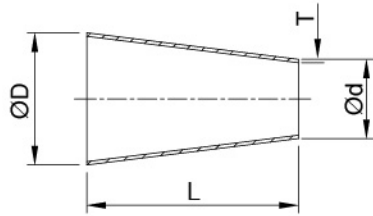


Reducing Tee

SIZE	ØD	Ød	L	L1	T
1.5"x1.0"	38.1	25.4	114.3	53.98	1.65
2.0"x1.0"	50.8	25.4	152.4	60.3	1.65
2.0"x1.5"	50.8	38.1	152.4	63.5	1.65
2.5"x1.5"	63.5	38.1	152.4	69.85	1.65
2.5"x2.0"	63.5	50.8	152.4	82.55	1.65
3.0"x1.5"	76.2	38.1	165.1	76.2	1.65
3.0"x2.0"	76.2	50.8	165.1	88.90	1.65
3.0"x2.5"	76.2	63.5	165.1	82.55	1.65
4.0"x2.0"	101.6	50.8	196.8	101.6	2.1
4.0"x2.5"	101.6	63.5	196.8	95.25	2.1
4.0"x3.0"	101.6	76.2	196.8	95.25	2.1

Vacuum Components (USA type)

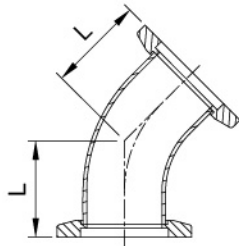
Concentric Reducer



Concentric Reducer

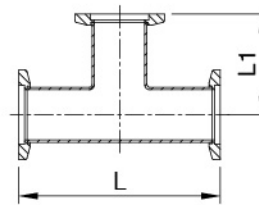
SIZE	ØD	Ød	L	T
1.5"x1.0"	38.1	25.4	50.8	1.65
2.0"x1.5"	50.8	38.1	50.8	1.65
2.5"x1.5"	63.5	38.1	101.6	1.65
2.5"x2.0"	63.5	50.8	50.8	1.65
3.0"x1.5"	76.2	38.1	152.4	1.65
3.0"x2.0"	76.2	50.8	101.6	1.65
3.0"x2.5"	76.2	63.5	50.8	1.65
4.0"x1.5"	101.6	38.1	254	2.1
4.0"x2.0"	101.6	50.8	203.2	2.1
4.0"x2.5"	101.6	63.5	152.4	2.1
4.0"x3.0"	101.6	76.2	101.6	2.1

45° Elbow Flange



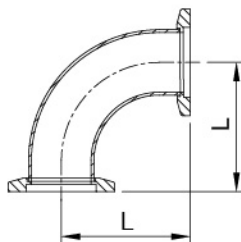
SIZE	O.D	L
KF25	1.0"	28.44
KF40	1.5"	42.67
KF50	2.0"	50.54

Tee Flange



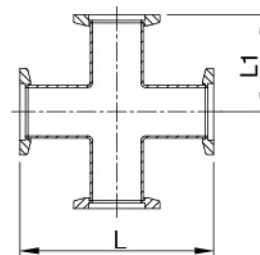
SIZE	O.D	L	L1
KF25	1.0"	100.07	50.03
KF40	1.5"	130.04	65.02
KF50	2.0"	139.95	70.01

90° Elbow Flange



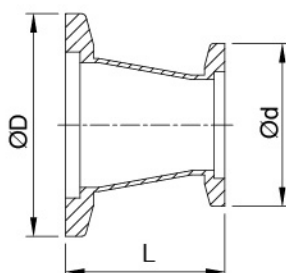
SIZE	O.D	L
KF25	1.0"	51.6
KF40	1.5"	61.0
KF50	2.0"	80.0

4-Way Cross Flange



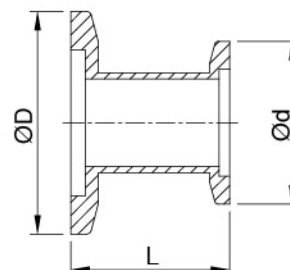
SIZE	O.D	L	L1
KF25	1.0"	103.2	51.6
KF40	1.5"	122.0	61.0
KF50	2.0"	160.0	80.0

Conical Reducer



ØD	Ød	L
KF25	KF16	39.9
KF40	KF16	39.9
KF40	KF25	39.9
KF50	KF16	39.9
KF50	KF25	39.9
KF50	KF40	39.9

Straight Reducer



ØD	Ød	L
KF25	KF16	39.9
KF40	KF16	39.9
KF40	KF25	39.9
KF50	KF16	39.9
KF50	KF25	39.9
KF50	KF40	39.9