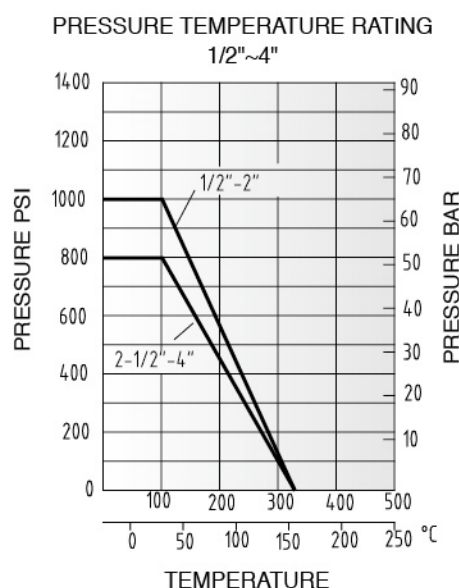
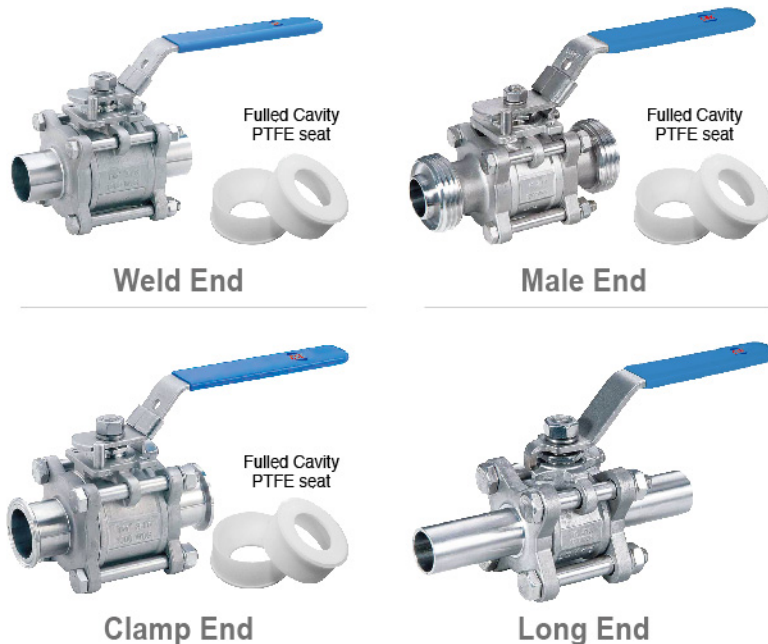


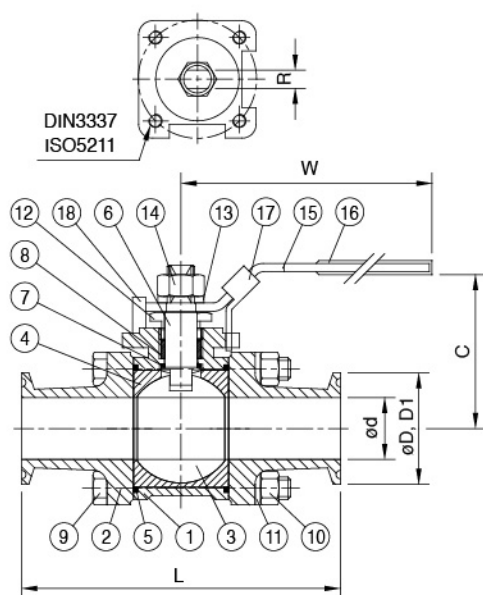
Ball Valve For Food And BPE Use With ISO Mount Plate Weld/male/clamp End-fulled Cavity Seat



- Lock device can be required.
- 100% air tested under water at 100psi, open and closed positions.
- Hydrostatic test pressure :
Body W.P 1000 PSI Tube End W.P 200 PSI
- Standard End: Weld & Clamp-End
Other SMS. DIN. RJT. IDF
Male/Male can be required.

Specifications for clamp & weld end

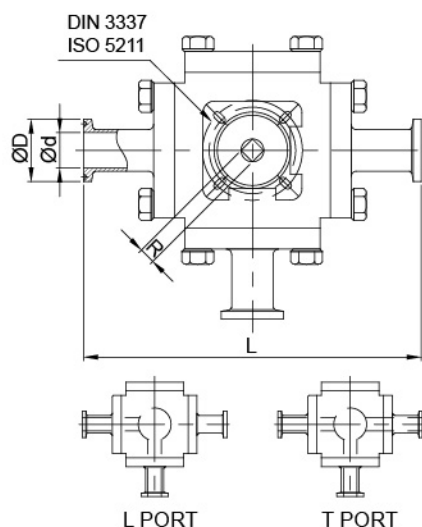
SIZE	1/2"	3/4"	1"	1.5"	2"	2.5"	3"	4"
	DN15	DN20	DN25	DN40	DN50	DN65	DN80	DN100
ISO-5211	F03	F03	F04	F05	F05	F07	F07	F10
C	58.3	62.9	68	87	95	127	136	159
ød	9.4	15.75	22.1	34.8	47.5	60.2	72.9	97.4
øD	25.2	25.2	50.5	50.5	64	77.5	91	119
øD1	12.7	19.05	25.4	38.1	50.8	63.5	76.2	101.6
L	89	101	114	140	156	197	229	243
R	5	5	6.5	8.5	8.5	12	12	16
W	130	130	166.7	194.3	194.3	252	252	333
L1	135	135	165	165	190	205	265	306



Parts List

Item	Part Name	Material
1	Body	ASTM-A743-CF8M
2	Cap	ASTM-A743-CF8M
3	Ball	A351-CF8M
4	Seat	PTFE
5	Gasket	PTFE
6	Stem	SUS316
7	Thrust washer	PTFE
8	Stem packing	PTFE
9	Bolt	SUS304
10	Hex nut	SUS304
11	Bolt washer	SUS304
12	Gland	SUS304
13	Washer	SUS304
14	Nut	SUS304
15	Handle	SUS304
16	Plastic cover	Plastic
17	Lock device	SUS304
18	Stop pin	SUS304

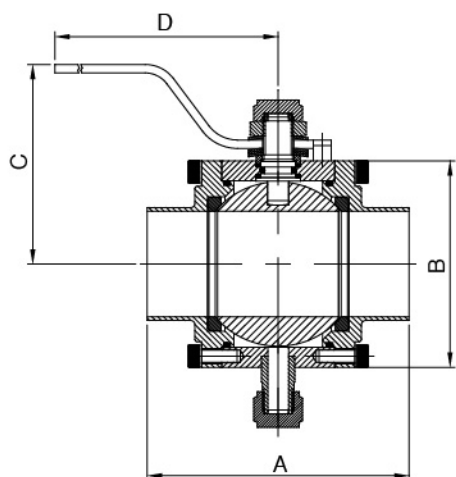
Sanitary-Ball Valve For Food Chemical, and Vacuum use. With ISO Mount Plate Weld/Male End



3 Way

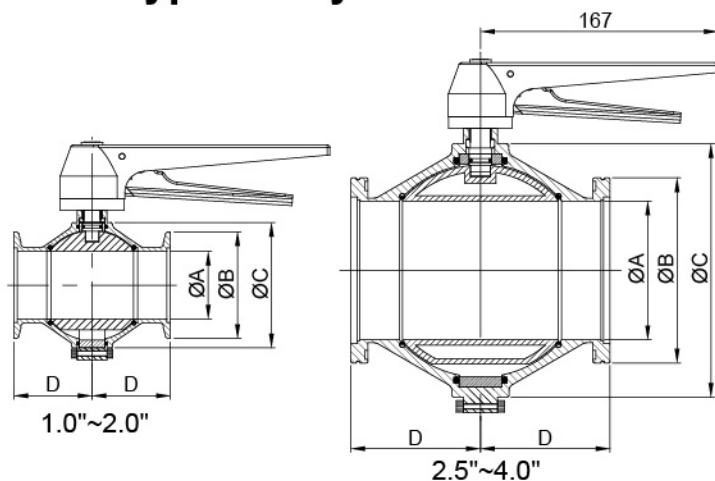
SIZE		ISO-5211	ød	øD	L	R
1/2"	DN15	F03	9.5	25.4	118	9
3/4"	DN20	F03	15.8	25.4	127	9
1.0"	DN25	F04	22.2	50.4	152.6	11
1.5"	DN40	F05	35	50.4	175	14
2.0"	DN50	F05	47.6	63.9	190	14
2.5"	DN65	F07	60.2	77.5	228	17
3.0"	DN80	F10	73	90.9	260.6	22
4.0"	DN100	F10	97.4	118.9	290	22

HIGH PURITY BALL VALVE - With CIP Hole Half Cavity Seat



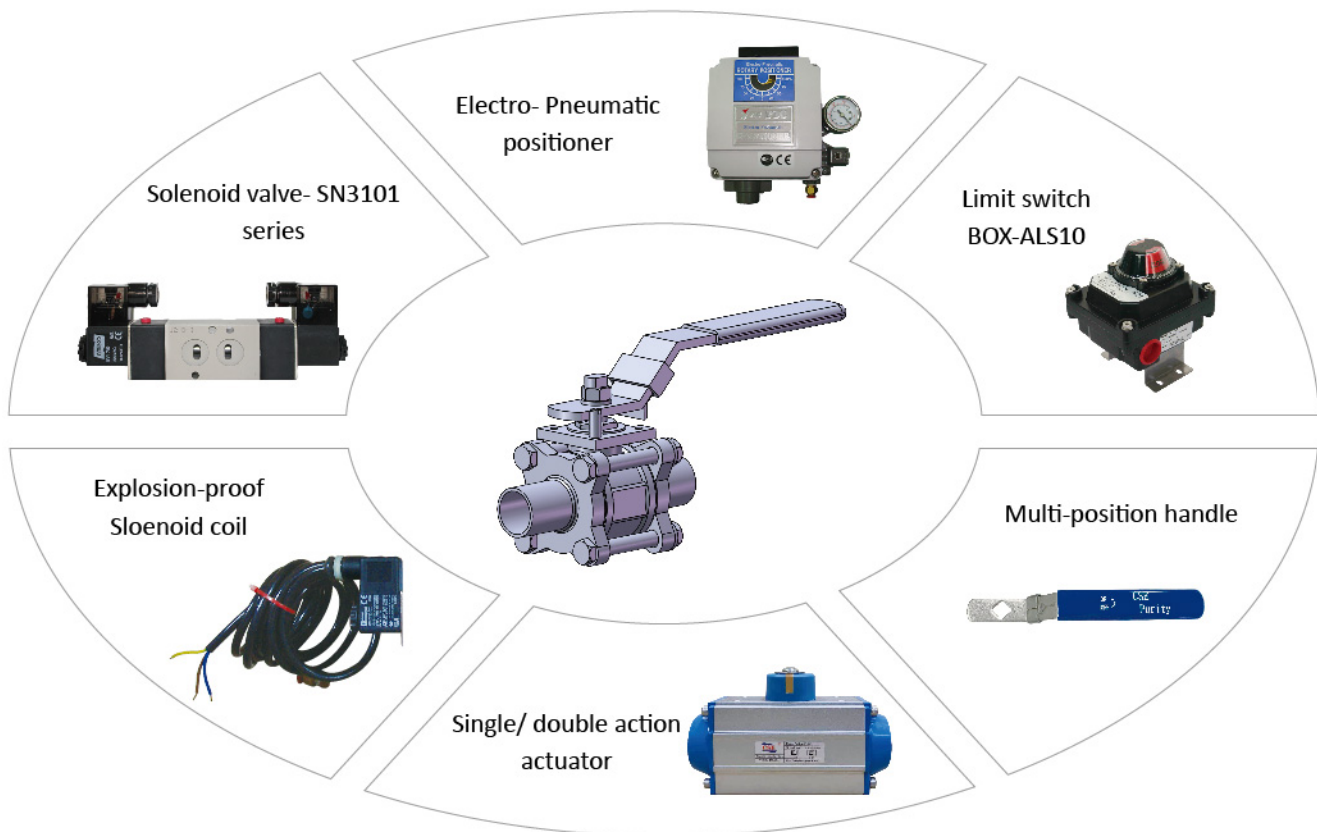
SIZE	A	B	C	D
1.0"	95.3	58.7	60.3	163.5
1.5"	108	77.8	71.4	163.5
2.0"	119	93.7	79.4	163.5
2.5"	135	106.4	85.7	163.5
3.0"	165.1	125.4	95.3	163.5

BFV Type Purity Ball Valve

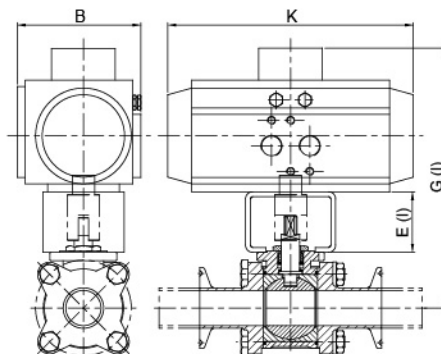


SIZE	ØA	ØB	ØC	D
1.0"	22.1	40	100	45
1.5"	34.8	55	105	55
2.0"	47.5	75	105	55
2.5"	60.2	95	145	65
3.0"	72.9	110	159	79
4.0"	97.4	130	198	91

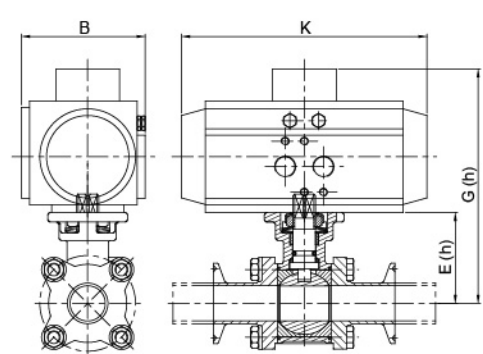
Accessories For Purity Ball Valve



Low ISO Mount



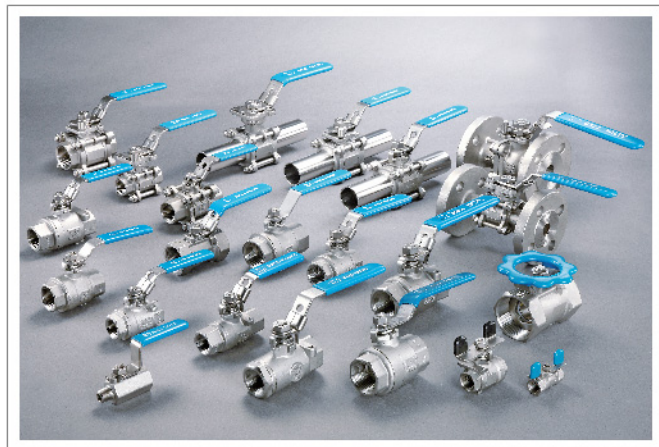
High ISO Mount



V type Size	B	K	Torque in.lbs	Low / High mount ISO-5211	E(l)	G(l)	E(h)	G(h)	Double Act. type	Single Act. type
1/2" DN15	70.5	154	90	F03/F04	38	157.8	38.2	128.2	VT050D	VT050 S11
3/4" DN20	70.5	154	100	F03/F04	38	162.1	47.5	137.5	VT050D	VT050 S11
1" DN25	70.5	154	140	F04/F05	38	192.9	57	177	VT050D	VT075 S08
1.5" DN40	89.5	189	240	F05/F07	51.5	230.05	78.55	211.55	VT065D	VT085 S10
2" DN50	102.5	210	480	F05/F07	51.5	261.48	86.5	424.5	VT075D	VT110 S10
2.5" DN65	112.5	229	650	F07/F10	51.5	317.75	109.2	300.2	VT085D	VT125 S08
3" DN80	138.5	226	1150	F07/F10	51.5	343	116.2	324.2	VT110D	VT140 S10
4" DN100	138.5	226	1400	F10/F12	61	372.7	133.5	341.5	VT110D	VT140 S10

(h)=High (l)=Low

CSE CHEMICAL Ball VALVE & CHEMICAL UNIONS



Ball Valve

- 1PC- 800WOG Ball valve NPT, PF, BSPT thread end, PTFE/PTFE+15% glass fiber seat.
- 2PC- full port reduction port WOG 1,000psi Ball valve, with lock design and ISO 5211 mount plate can be specified.
Flange end: PN 10/16 , JIS 5/10 K
Seat: PTFE/PTFE+15% G.F
- 3PC- full port-WOG 1,000psi with lock design and ISO5211 mount plate can be specified.
Flange end: PN 10/16 , JIS 5/10 K
Seat: PTFE/PTFE+15% G.F

Design tested to $\text{CE 97/23/EC ART 3 } 3 \leq \text{DN25}$, and table 6 D1 standard.

ISO5211 mount plate and special design can be specified.



Chemical Unions

CSE makes a full range of lost wax cast 150psi, screw fittings.

We also offer high class chemical screw fittings, unions and nipples....with solid bar, hex bar, pipe and precision CNC finished surface.

Welcome: OEM, ODM, services.



Ball for Valve

Joint CSE Taiwan the abilities of the casting, CNC machining, welding, hydraulic pressure, polishing, multi-surface finished, CSE offer not only OEM parts, but also for parts of products, such as the BALL for ball valve.

Material: Stainless steel 304 / 316 / 316L