

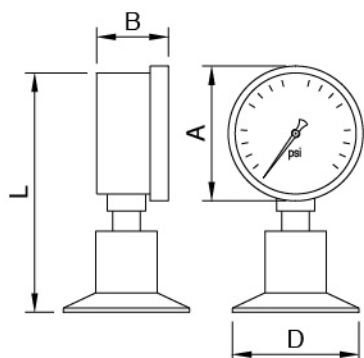
Sanitary Standard Pressure Gauge

Note:

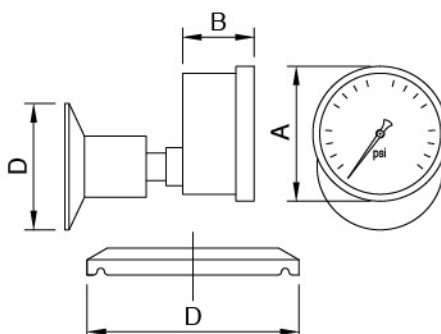
Sanitary pressure gauges are stainless steel products specifically designed to meet the demanding sanitary requirements for food dairy, beverage, pharmaceutical and biotech applications.

Complies with 3A sanitary standard, water-proof, shock resistant, and closed structures are durable and accurate, good for long time running. All series are liquid-filled, special materials movement and bourdon tube have lasting durability. It is applicable to the places of both strong fluctuation and non-corrosive fluid, such as air, water and oil.

Back connection/ Bottom connection

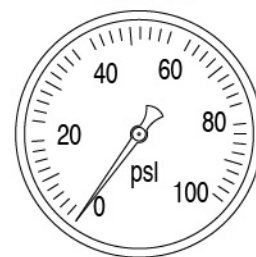


SIZE	A	B	L
Ø50	56	30	100
Ø63	69	30	122
Ø80	89	30	140
Ø100	112	47	166
Ø160	160	50	224

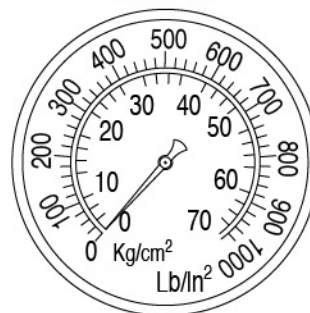


SIZE	D (Tri-clamp)
1.0"	50.5
1.5"	50.5
2.0"	64
2.5"	77.5
3.0"	91
4.0"	119

CSE-PG1



CSE-PG2



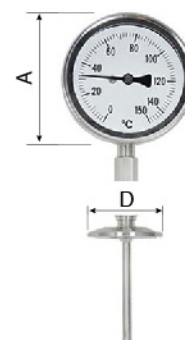
- Process connection : 1-1/2" , 2.0" , 2-1/2"
- Quick-release clamp piping system
- Suitable Pressure Ranges : 15psi to 600psi
- Instrument Connection : 1/4"NPT /BSPT or 1/2"NPT /BSPT
- Case & Movement Material : SS304
- Connection Material : SUS316L
- Diaphragm Material : SUS316L
- Fill Fluid : Glycerined (Vegetable oil)
- Bourdon Tube Material : SUS316L
- Ferrule Material : SUS304/SUS316L
- Lens : Safety Glass
- Max temperature : standard-120°C , special-150°C

Thermometer

CSE-TM-T



CSE-TM-I



- Process connection : 1-1/2" ~ 4"
- Quick-release clamp piping system
- Case & Movement Material : SS304
- Ferrule Material : SS304/ SUS316
- Lens : Safety Glass