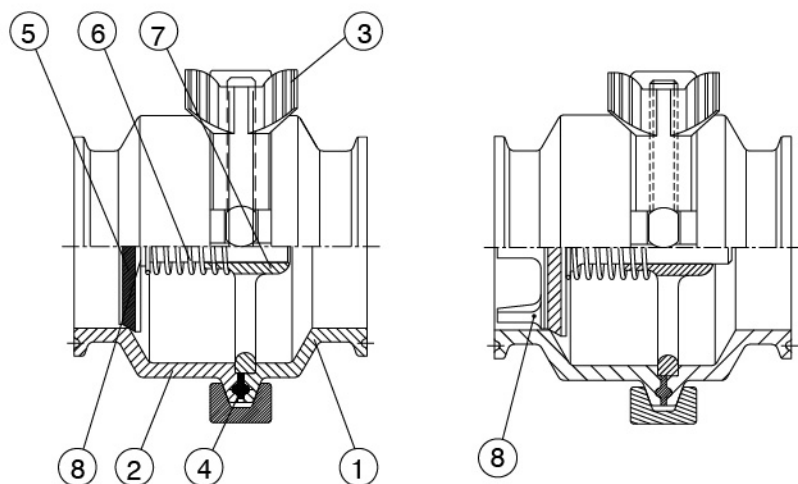


CSE Non Return Valve (Check Valve)



NO.	NAME
1	Short Body
2	Long Body
3	Clamp
4	13PG
5	Seal-Ring
6	ST.ST Spring
7	Flow Support Plate
8	Disc

(Guide Finger can be request)

CSE Check Valve :

Materials

Steel parts : Stainless steel SS316(L)

Seal rings : EPDM Rubber or Silicone/Viton (FKM)

Finish : OD ≤ 0.8 , ID ≤ 0.8 or $0.4\mu\text{m}$

Connections

The valve is available with welding ends for tubing according to 3A, SMS, BS, DIN

Technical data

Required different pressure for opening the valve fitted in a vertical pipe, as shown in fig.1,
the working pressure Max. product pressure : as shown in fig.2

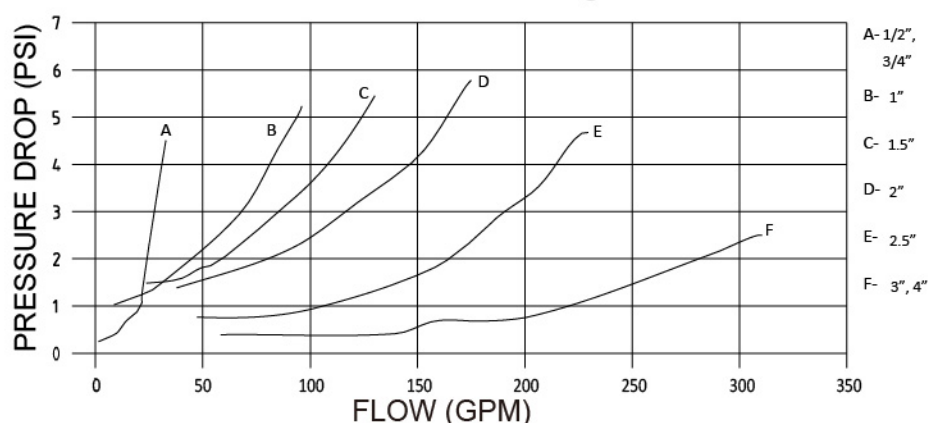
Material grades

Gasket-Body:EPDM/Silicone/FKM/NBR/PTFE

Flow Area-EPDM/Silicone/FKM/NBR



SPRING CHECK VALVE flow rate (fig 2)



A- 1/2",
3/4"
B- 1"
C- 1 1/2"
D- 2"
E- 2 1/2"
F- 3", 4"

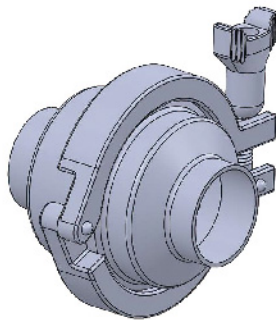
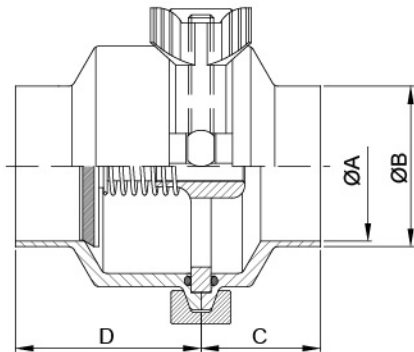
Note:
For the diagram the following applies:
Medium :Water(20°C)

Open pressure (PSI)

1/2"	3/4"	1"	1 1/2"	2"	2 1/2"	3"	4"
0.5	0.5	1.0	1.6	1.3	0.6	0.4	0.4

Open Pressure (fig. 1)

CSE Non-Return Valve

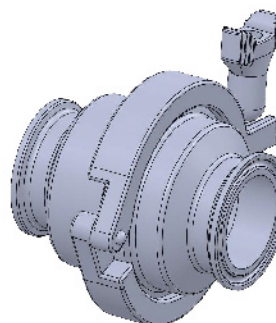
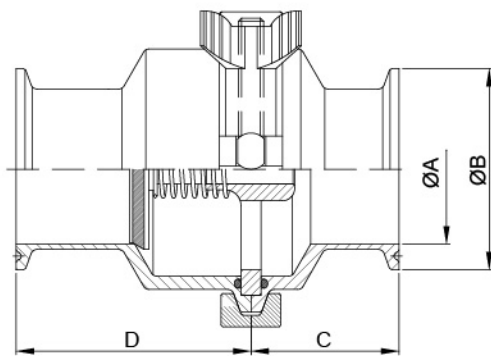


CHECK VALVE MIDDLE CLAMP TYPE/WELD END

3A/BS	ØA	ØB	C	D
1/2"	9.4	12.7	23	34
3/4"	15.75	19.05	23	34
1.0"	22.1	25.4	38	59
1.5"	34.8	38.1	38	59
2.0"	47.5	50.8	38	59
2.5"	60.2	63.5	38	59
3.0"	72.9	76.2	38	59
4.0"	97.6	101.6	44	50

SMS	ØA	ØB	C	D
DN25	22.5	25	38	59
DN38	35.4	38	38	59
DN50	48	51	38	59
DN63	60.3	63.5	38	59
DN76	72.1	76	38	59

DIN	ØA	ØB	C	D
DN25	25	28	38	59
DN32	31	34	38	59
DN40	37	40	38	59
DN50	49	52	38	59
DN65	66	70	38	59



CHECK VALVE MIDDLE CLAMP TYPE/CLAMP END

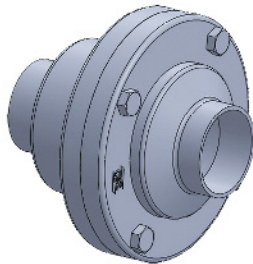
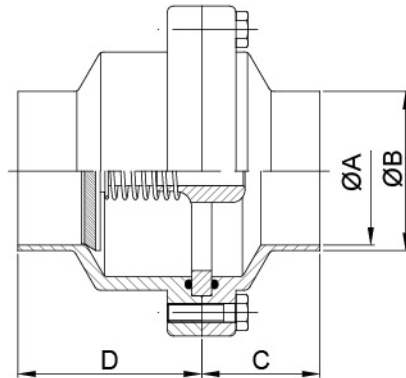
3A/BS	ØA	ØB	C	D
1/2"	9.4	25.2	28.5	39.5
3/4"	15.75	25.2	28.5	39.5
1.0"	22.1	50.5	42	59
1.5"	34.8	50.5	42	59
2.0"	47.5	64	42	59
2.5"	60.2	77.5	42	59
3.0"	72.9	91	42	59

SMS	ØA	ØB	C	D
DN25	22.5	50.5	42	59
DN38	35.4	50.5	42	59
DN50	48	64	42	59
DN63	60.3	77.5	42	59
DN76	72.1	91	42	59

DIN	ØA	ØB	C	D
DN25	25	50.5	42	59
DN32	31	50.5	42	59
DN40	37	50.5	42	59
DN50	49	64	42	59
DN65	66	91	42	59
DN80	81	106	42	59

CSE Non-Return Valve

BPE/ Sanitary / Semi-conductor

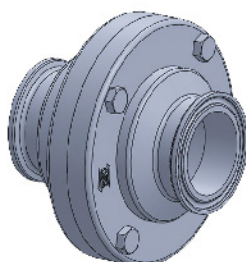
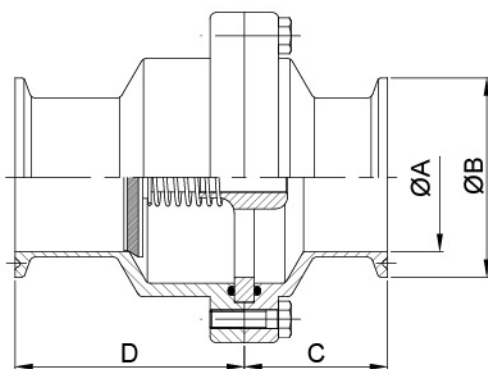


CHECK VALVE MIDDLE FLANGE TYPE/WELD END

3A/BS	ØA	ØB	C	D
1/2"	9.4	12.7	23	34
3/4"	15.75	19.05	23	34
1.0"	22.1	25.4	38	59
1.5"	34.8	38.1	38	59
2.0"	47.5	50.8	38	59
2.5"	60.2	63.5	38	59
3.0"	72.9	76.2	38	59
4.0"	97.6	101.6	44	50

SMS	ØA	ØB	C	D
DN25	22.5	25	38	59
DN38	35.4	38	38	59
DN50	48	51	38	59
DN63	60.3	63.5	38	59
DN76	72.1	76	38	59

DIN	ØA	ØB	C	D
DN25	25	28	38	59
DN32	31	34	38	59
DN40	37	40	38	59
DN50	49	52	38	59
DN65	66	70	38	59
DN80	81	85	38	59



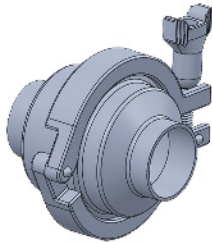
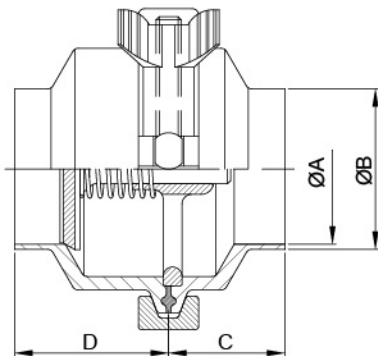
CHECK VALVE MIDDLE FLANGE TYPE/CLAMP END

3A/BS	ØA	ØB	C	D
1/2"	9.4	25.2	28.5	39.5
3/4"	15.75	25.2	28.5	39.5
1.0"	22.1	50.5	42	59
1.5"	34.8	50.5	42	59
2.0"	47.5	64	42	59
2.5"	60.2	77.5	42	59
3.0"	72.9	91	42	59
4.0"	97.6	119	56.7	62.6

SMS	ØA	ØB	C	D
DN25	22.5	50.5	42	59
DN38	35.4	50.5	42	59
DN50	48	64	42	59
DN63	60.3	77.5	42	59
DN76	72.1	91	42	59

CSE Non-Return Valve

PG TYPE



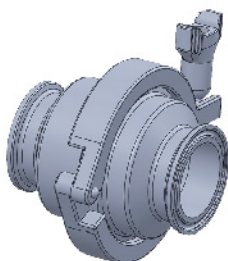
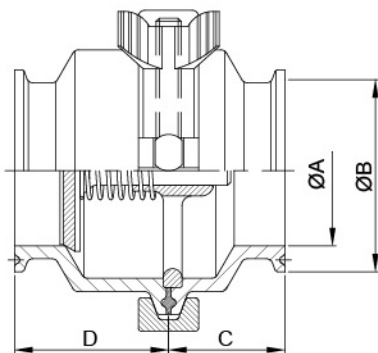
CHECK VALVE MIDDLE CLAMP TYPE/WELD END

3A/BS	ØA	ØB	C	D
1/2"	9.4	12.7	24	34
3/4"	15.75	19.05	24	34
1.0"	22.1	25.4	34	48
1.5"	34.8	38.1	36	48
2.0"	47.5	50.8	36	48
2.5"	60.2	63.5	36	48
3.0"	72.9	76.2	36	48
4.0"	97.6	101.6	47	54

SMS	ØA	ØB	C	D
DN25	22.5	25	34	48
DN38	35.5	38	36	48
DN50	48.5	51	36	48
DN63	60.3	63.5	36	48
DN76	72.1	76.1	36	48
DN100	100	104	47	54

DIN	ØA	ØB	C	D
DN25	25	28	24	34
DN32	31	34	24	34
DN40	37	40	34	48
DN50	49	52	36	48
DN65	66	70	36	48
DN80	81	85	36	48
DN100	100	104	47	54

PG TYPE



CHECK VALVE MIDDLE CLAMP TYPE/CLAMP END

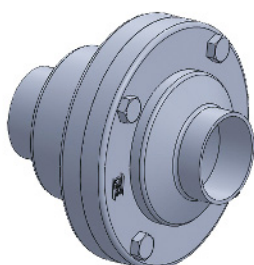
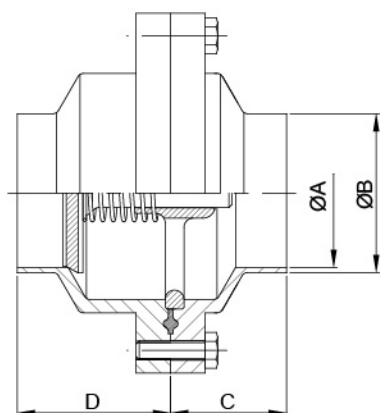
3A/BS	ØA	ØB	C	D
1/2"	9.4	25.2	28.5	39.5
3/4"	15.75	25.2	28.5	39.5
1.0"	22.1	50.5	34	48
1.5"	34.8	50.5	36	48
2.0"	47.5	64	36	48
2.5"	60.2	77.5	36	48
3.0"	72.9	91	36	48
4.0"	97.6	119	47	54

SMS	ØA	ØB	C	D
DN25	22.5	50.5	34	48
DN38	35.5	50.5	36	48
DN50	48.5	64	36	48
DN63	60.3	77.5	36	48
DN76	72.1	91	36	48
DN100	100	119	47	54

DIN	ØA	ØB	C	D
DN25	25	50.5	34	48
DN32	31	50.5	36	48
DN40	37	50.5	36	48
DN50	49	64	36	48
DN65	66	91	36	48
DN80	81	106	36	48
DN100	100	119	47	54

CSE Non-Return Valve

PG TYPE



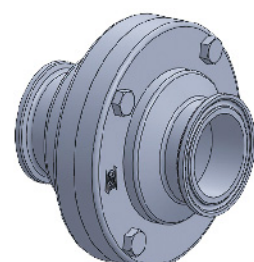
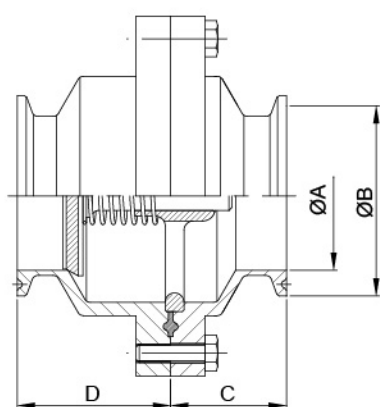
CHECK VALVE MIDDLE FLANGE TYPE/WELD END

3A/BS	ØA	ØB	C	D
1.0"	22.1	25.4	34	48
1.5"	34.8	38.1	36	48
2.0"	47.5	50.8	36	48
2.5"	60.2	63.5	36	48
3.0"	72.9	76.2	36	48
4.0"	97.6	101.6	47	54

SMS	ØA	ØB	C	D
DN25	22.5	25	34	48
DN38	35.5	38	36	48
DN50	48.5	51	36	48
DN63	60.3	63.5	36	48
DN76	72.1	76.1	36	48
DN100	100	104	47	54

DIN	ØA	ØB	C	D
DN25	25	28	34	48
DN32	31	34	36	48
DN40	37	40	36	48
DN50	49	52	36	48
DN65	66	70	36	48
DN80	81	85	36	48

PG TYPE



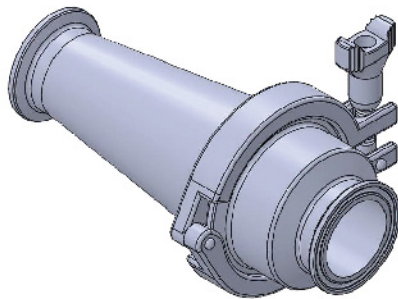
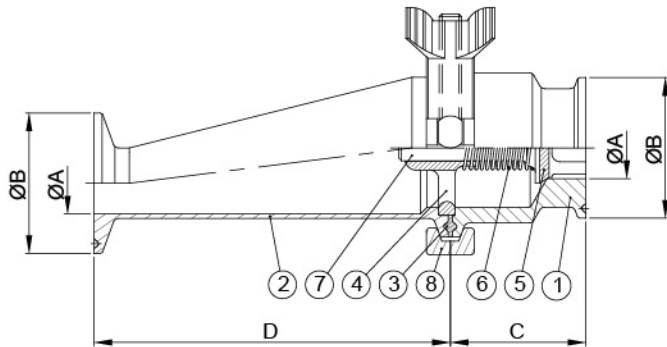
CHECK VALVE MIDDLE FLANGE TYPE/CLAMP END

3A/BS	ØA	ØB	C	D
1.0"	22.1	50.5	34	48
1.5"	34.8	50.5	36	48
2.0"	47.5	64	36	48
2.5"	60.2	77.5	36	48
3.0"	72.9	91	36	48
4.0"	97.6	119	47	54

SMS	ØA	ØB	C	D
DN25	22.5	50.5	34	48
DN38	35.5	50.5	36	48
DN50	48.5	64	36	48
DN63	60.3	77.5	36	48
DN76	72.1	91	36	48
DN100	100	119	47	54

CSE Non-Return Valve

LEVEL TYPE

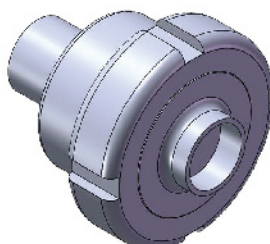
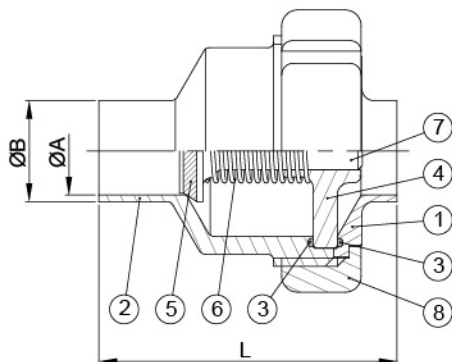


3A ECCENTRIC CHECK VALVE CLAMP END

SIZE	ØA	ØB	C	D
1.0"	22.1	50.5	48	127.3
1.5"	34.8	50.5	48	127.3
2.0"	47.5	64	48	127.3
2.5"	60.2	77.5	48	127.3

NO.	NAME
1	Short body
2	Long body
3	13PG
4	Flow support plate
5	Seal-Ring
6	Spring
7	Disc
8	Clamp

UNION TYPE



3A CHECK VALVE WELD END

SIZE	ØA	ØB	L
1.0"	22.1	25.4	75
1.5"	34.8	38.1	76
2.0"	47.5	50.8	76
2.5"	60.2	63.5	78
3.0"	72.9	76.2	78
4.0"	97.6	101.6	80

NO.	NAME
1	Short body
2	Long body
3	O-Ring
4	Flow support plate
5	Seal-Ring
6	Spring
7	Disc
8	Nut