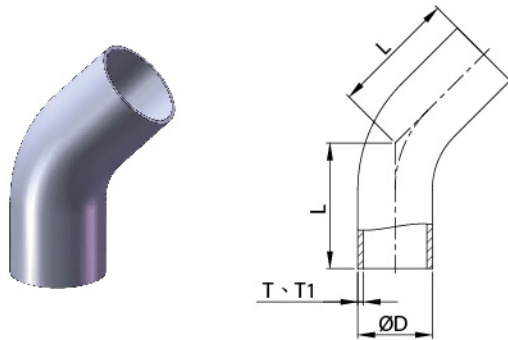
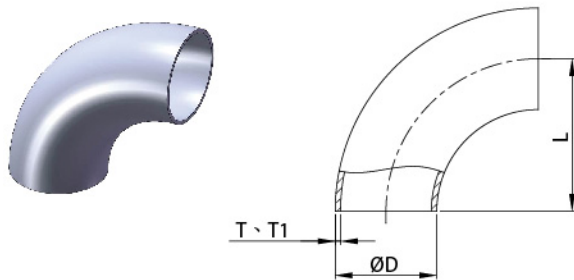


SMS Tubular Items



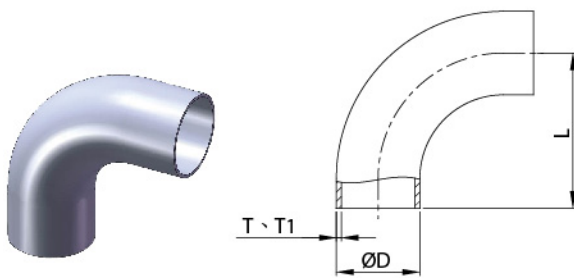
**L2KS1D
LONG 45° ELBOW**

SIZE	ØD	L	T	T1
DN25	25	42.33	1.25	1.5
DN38	38	48.72	1.25	1.5
DN51	51	58.15	1.25	1.5
DN63	63.5	75.3	1.5	1.5
DN76	76.1	79.37	1.6	2
DN104	101.6/104	85.54	2	2



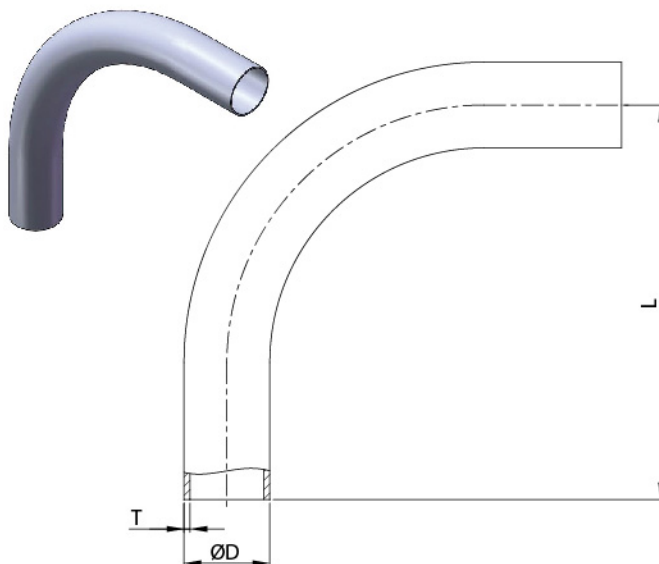
**2WCL
SHORT 90° ELBOW**

SIZE	ØD	L	T	T1
DN25	25	37.5	1.25	1.5
DN38	38	57	1.25	1.5
DN51	51	76.5	1.25	1.5
DN63	63.5	95.25	1.5	1.5
DN76	76.1	114.15	1.6	2
DN104	101.6/104	152.1	2	2



**L2S1D
LONG 90° ELBOW**

SIZE	ØD	L	T	T1
DN25	25	55	1.25	1.5
DN38	38	70	1.25	1.5
DN51	51	82	1.25	1.5
DN63	63.5	105	1.5	1.5
DN76	76.1	110	1.6	2
DN104	101.6/104	150	2	2



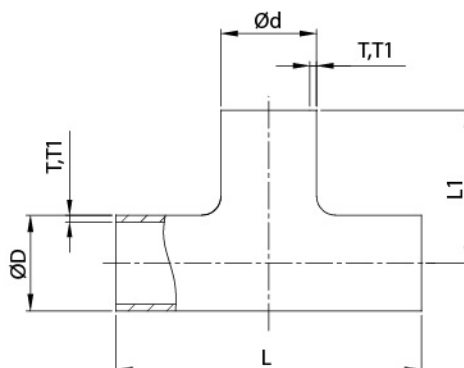
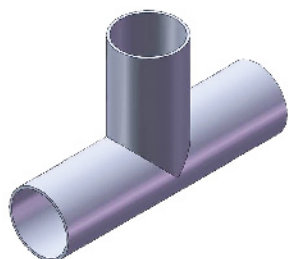
LONG 90° ELBOW (3D)

SIZE	ØD	L	T
DN25	25	115	1.2
DN38	38	138	1.2
DN40	40	170	1.5
DN51	51	180	1.2
DN63	63.5	230	1.5
DN76	76.1	250	1.6

SMS Tubular Items

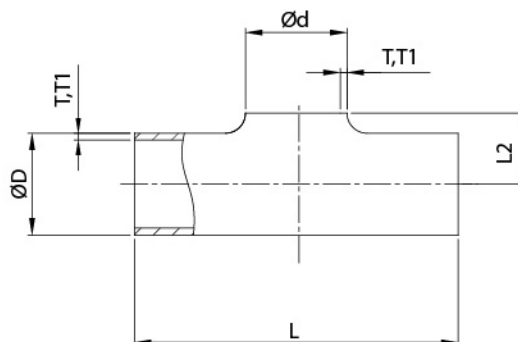
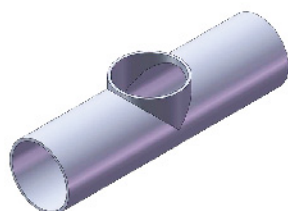
SMS 7W

Tee With Stright-End



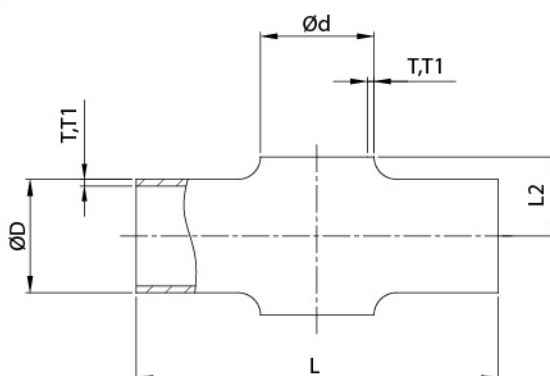
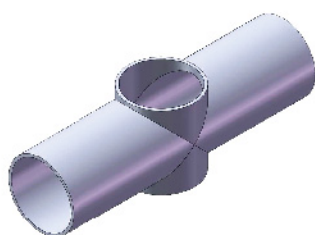
SMS 7WO

TEE Without Straight-End



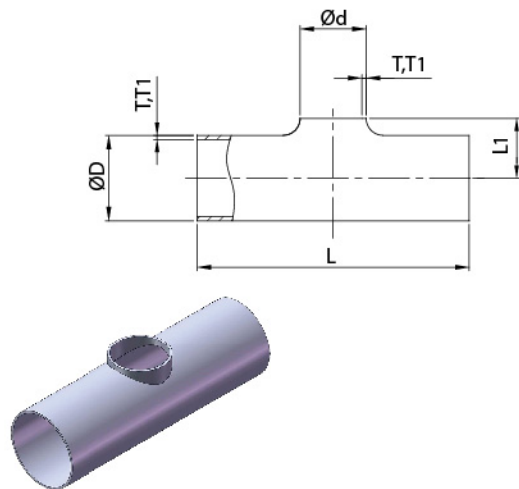
SMS 9WO

Welding Cross Without Straight-End



SIZE	$\varnothing D$	$\varnothing d$	L	L1	L2	T	T1
DN25	25	25	110	55	14	1.25	1.5
DN38	38	38	140	70	21	1.25	1.5
DN51	51	51	164	82	28.5	1.25	1.5
DN63	63.5	63.5	210	105	36	1.5	1.5
DN76	76.1	76.1	220	110	43	1.6	2
DN104	104	104	300	150	58	2	2

SMS Tubular Items

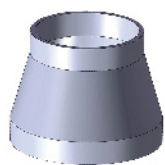
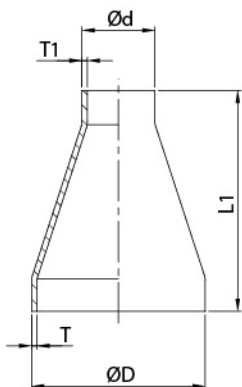


7RWO

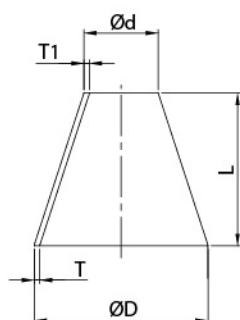
WELDING REDUCING TEE WITHOUT STRAIGHT-END

SIZE	ØD	Ød	L	L1	T	T1
38*25	38	25	140	21	1.25	1.5
51*25	51	25	164	29	1.25	1.5
51*38	51	38	164	29	1.25	1.5
63*25	63.5	25	210	34.5	1.5	1.5
63*38	63.5	38	210	35	1.5	1.5
63*51	63.5	51	210	36	1.5	1.5
76*25	76.1	25	220	41	1.6	2
76*38	76.1	38	220	42	1.6	2
76*51	76.1	51	220	43	1.6	2
76*63	76.1	63.5	220	43	1.6	2
104*25	104	25	300	56	2	2
104*38	104	38	300	56	2	2
104*51	104	51	300	57	2	2
104*63	104	63.5	300	58	2	2
104*76	104	76.1	300	58	2	2

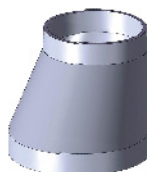
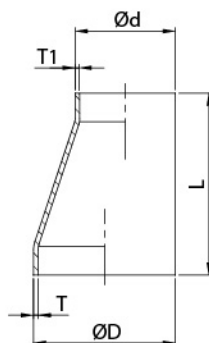
SMS L31SE Concentric Reducer



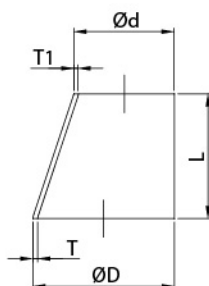
SMS L31 Concentric Reducer



SMS L32SE Eccentric Reducer



SMS L32 Eccentric Reducer



WELD REDUCER

SIZE	ØD	Ød	L	L1	T	T1
38*25	38	25	39	46	1.25	1.25
51*25	51	25	57	68	1.25	1.25
51*38	51	38	39	47	1.25	1.25
63*25	63.5	25	74	92	1.5	1.25
63*38	63.5	38	57	70	1.5	1.25
63*51	63.5	51	39	44	1.5	1.25
76*25	76.1	25	92	—	1.6	1.25
76*38	76.1	38	74	92	1.6	1.25
76*51	76.1	51	57	68	1.6	1.25
76*63	76.1	63.5	39	47	1.6	1.5
104*51	104	51	95	117	2	1.25
104*63	104	63.5	78	94	2	1.5
104*76	104	76.1	60	74	2	1.6

W/O STRAIGHT END REDUCER

SIZE	ØD	Ød	L1	T	T1
38*25	38	25	39	1.2	1.2
51*25	51	25	78	1.2	1.2
51*38	51	38	39	1.2	1.2
63*25	63.5	25	116	1.6	1.2
63*38	63.5	38	76	1.6	1.2
63*51	63.5	51	38	1.6	1.2
76*25	76.1	25	153	1.6	1.2
76*38	76.1	38	114	1.6	1.2
76*51	76.1	51	75	1.6	1.2
76*63	76.1	63.5	38	1.6	1.2
104*38	104	38	198	2	1.2
104*51	104	51	159	2	1.2
104*63	104	63.5	122	2	1.2
104*76	104	76.1	84	2	1.6