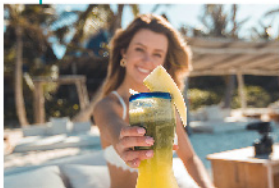




3A.SMS.DIN.BS.AS

Tube Line / Elbow / Tee / Reducer



CSE Wide Range Tube Line

CSE tube fittings can be used for sanitary, pharmaceutical, vacuum...etc purposes.



It can be equipped with different types or connection ends, as 45°/90° elbow, tee, concentric/ eccentric reducer....weld, clamp, unions....
Standard type: 3A, SMS, DIN, BS, BPE...etc.

Material: ASTM 304, 316, 316L

Surface: 1) ID/OD polishing .

2) Only ID polishing .

3) Only OD polishing .

4) unpolished.

Roughness: #400, #320, #240, #180....

Ra≤0.8μm, 0.6μm, 0.5μm, 0.4μm.....

(Other surface finished can be ordered).

CSE Sanitary Tubes For Biochemistry, Pharmaceutical, Food...etc.

3A STANDRD			BPE STANDRD			IDF STANDRD			SMS STANDRD			DIN EN10357 DIN11850/11865					ISO 1127 series 1			A size (JIS G3459) STANDRD			
SIZE	O.D.	T	SIZE	O.D.	T	SIZE	O.D.	T	SIZE	O.D.	T	SIZE	O.D.-DB	O.D.-DA	O.D.(11865)	T	SIZE	O.D.	T	SIZE	O.D.	T(SCH.5S)	T(SCH.10S)
1/4"	6.35	1.245	1/4"	6.35	0.89	1.0 ^s	25.4	1.2	DN25	25	1.25/1.5	DN6	—	—	8	1	DN6	10.3	1/1.2/1.6	6A	10.5	1	1.2
3/8"	9.525	1.245	3/8"	9.53	0.89	1.25 ^s	31.8	1.2	DN38	38	1.25/1.5	DN8	—	—	10	1	DN8	13.5	1/1.2/1.6	8A	13.8	1.2	1.65
1/2"	12.7	1.65	1/2"	12.7	1.65	1.5 ^s	38.1	1.2	DN50	51	1.25/1.5	DN10	12	13	13	1.5	DN10	17.2	1/1.6	10A	17.3	1.2	1.65
3/4"	19.05	1.65	3/4"	19.05	1.65	2.0 ^s	50.8	1.5	DN63	63.5	1.5	DN15	18	19	19	1.5	DN15	21.3	1/1.6	15A	21.7	1.65	2.1
1.0"	25.4	1.65	1.0"	25.4	1.65	2.5 ^s	63.5	2	DN76	76.1	1.6/2	DN20	22	23	23	1.5	DN20	26.9	1/1.6	20A	27.2	1.65	2.1
1.5"	38.1	1.65	1.5"	38.1	1.65	3.0 ^s	76.3	2	DN100	101.6/104	2	DN25	28	29	29	1.5	DN25	33.7	1.2/1.6	25A	34	1.65	2.8
2.0"	50.8	1.65	2.0"	50.8	1.65	3.5 ^s	89.1	2				DN32	34	35	35	1.5	DN32	42.4	1.6/2	32A	42.7	1.65	2.8
2.5"	63.5	1.65	2.5"	63.5	1.65	4.0 ^s	101.6	2				DN40	40	41	41	1.5	DN40	48.3	1.6/2	40A	48.6	1.65	2.8
3.0"	76.2	1.65	3.0"	76.2	1.65	4.5 ^s	114.3	3				DN50	52	53	53	1.5	DN50	60.3	1.6/2	50A	60.5	1.65	2.8
4.0"	101.6	2.1	4.0"	101.6	2.11	5.5 ^s	139.8	3				DN65	70	70	70	2	DN65	76.1	1.6/2	65A	76.3	2.1	3
5.0"	127	2.77	6.0"	152.4	2.77	6.5 ^s	165.2	3				DN80	85	85	85	2	DN80	88.9	1.6/2	80A	89.1	2.1	3
6.0"	152.4	2.77										DN100	104	104	104	2	DN100	114.3	1.6/2	90A	101.6	2.1	3
8.0"	203.2	2.77										DN125	129	129	129	2	DN125	139.7	1.6/2	100A	114.3	2.1	3
10"	254	3.05										DN150	154	154	154	2	DN150	168.3	1.6/2	125A	139.8	2.8	3.4
12"	304.8	3.05										DN200	204	204	204	2	DN200	219.1	2/2.6	150A	165.2	2.8	3.4
												DN250	254			2	DN250	273	2/2.6	200A	216.3	2.8	4
												DN300	306			3	DN300	323.9	2.6/3.2	250A	267.4	3.4	4
																				300A	318.5	4	4.5

CSE Sanitary for food, and pharmaceutical industry

Material: ASTM 304, 304L, 316L

Spec: ASTM A269, A270.

Surface & Roughness:

1. OD/ID Pickle (Ra≤1.0μm)
2. Polished:
 - (1) ID Polished to 180Grit (Ra≤0.8μm).
 - (2) ID Polished to 240Grit (Ra≤0.6μm).
 - (3) ID Polished to 320Grit (Ra≤0.5μm).
 - (4) ID Polished to 420Grit (Ra≤0.4μm).
 - (5) Electro polished:
 - (5-1). ID Electro polished Ra≤0.5μm).
 - (5-2). ID Electro polished Ra≤0.38μm).

