



Diaphragm Valve

Multi-port & blocks Diaphragm Valve



Diaphragm valve with sub-body connecting and block type ones that composed of two or more valve bodies both are an innovative concept design combined with modern processing technology. The multi-port direction valve body is convenient to connect to different tubing-lines which can save installation time and space, it can also be designed according to customized requirements as multi-angle or installing location.

These types of valve bodies made of forged or cast materials are mostly used for sampling or steam applications. It can simplify the traditional valve combination configuration, and the design that can reduce the dead angle and ensure complete drainage to achieve the effect of sterilization.

Advantage

- Customized specific design.
- Compact design and smaller envelope dimension is achievable for the actuators.
- Combination of many different nominal diameters.
- Optimized drain ability and minimized dead leg.
- Reduction of using fittings, tubing and welding jobs in a system.
- All end connections and materials are available according to the customer's specification.

Code Description

Multi-port type Example : LAV0 - 1.1

L	A	V	0	-	1	1
Main body	Main body tilt angle	Sub-body	Sub-body Angle tilt angle		The location to connect sub-boy with main body	Sub-body direction
level = L vertical = V	With tilt angle = A Without tilt angle = 0	Horizontal = H vertical = V	With tilt angle = A Without tilt angle = 0		Left = 1 right = 2	1 = front 2 = behind

Block type Example : LBV90

L	B	I	90
Main run	Diaphragm + main run	Outlet port shape	Outlet port angle
level = L vertical = V U type = U Bending = B	back to back = B not level = O	tilt = A upright = I V type = V Bending = B Horizontal = H	45° = 45 90° = 90



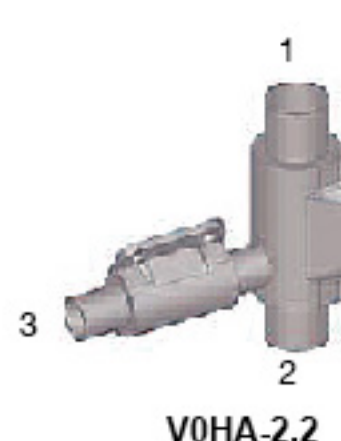
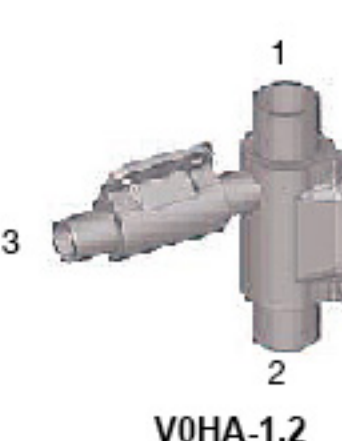
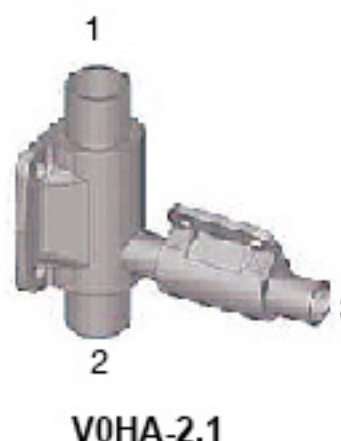
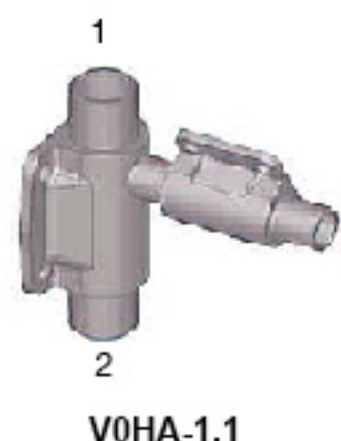
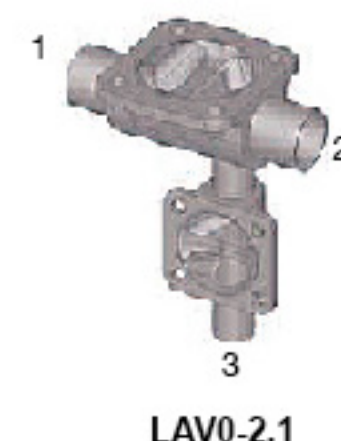
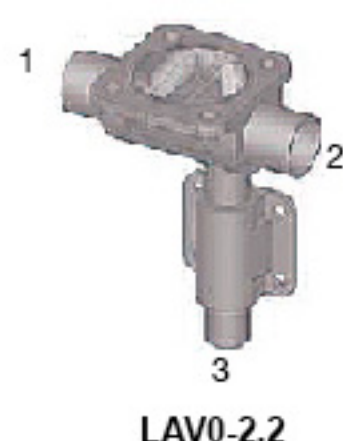
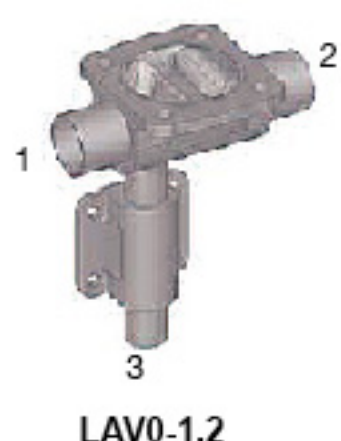
TDV TYPE

Multi-port Diaphragm Valve

The multi-port body design is helping to streamline the fitting line and is taking the advantages of the combination of traditional valve position and assembly, and there are options of a variety of angles and positions in series to choose from for venting or steering, often using for sampling or steam.

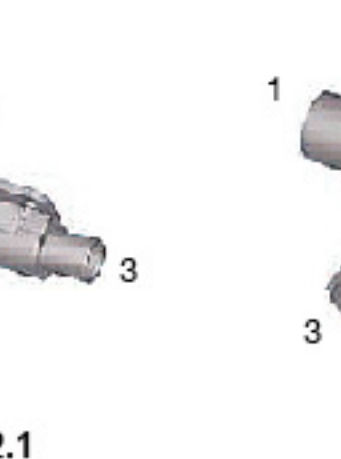
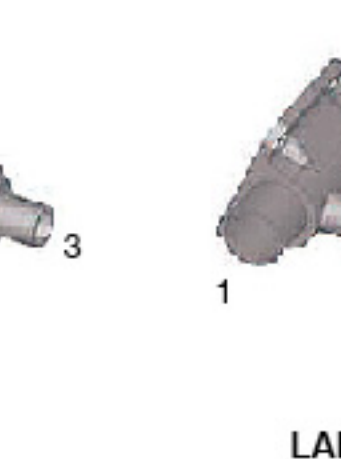
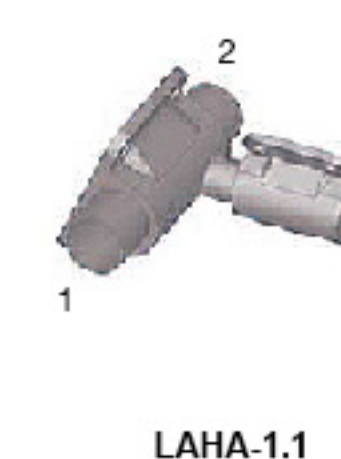
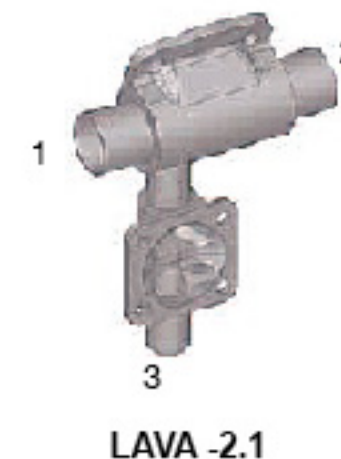
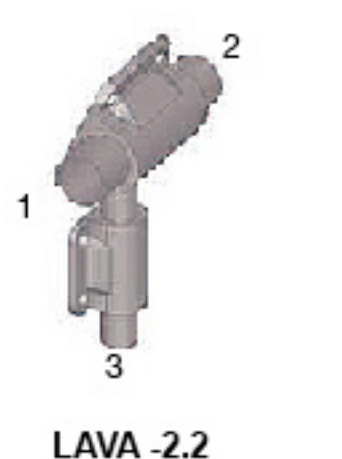
Level main body at drain angle / vertical sub-body (LAV0 – type)

Vertical main body / horizontal sub-body at drain angle (V0HA – type)



Level main body at drain angle / vertical sub-body at drain angle (LAVA – type)

Level main body at drain angle / horizontal sub-body at drain angle (LAHA – type)



BDV TYPE

Block Diaphragm Valve

The block diaphragm valve body is designed to be no gap which can ensure completely drain and zero dead angle, and optimize the complex tubing-line system for safe fluid configuration, recommended for horizontal installation position.

LBI90 - type

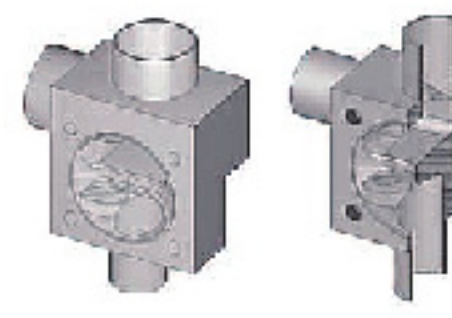
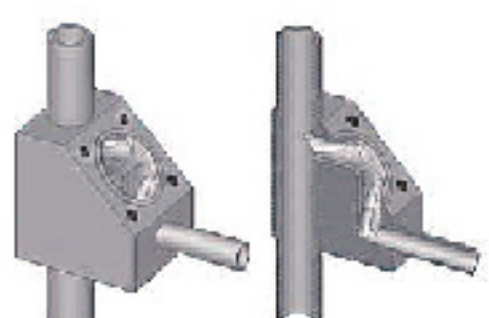
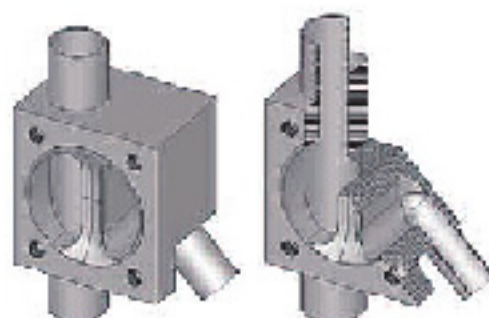
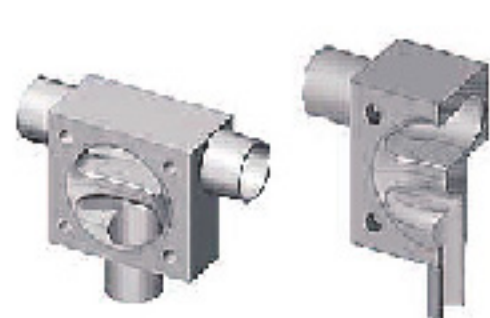
VBA45 - type

VOH90 - type

LBV90 - type

UBI90 – type

BOI90- type



Eccentric bodies for sampling

Center bodies for sampling

Fully integrated type

A-type

B-type

C-type

D-type

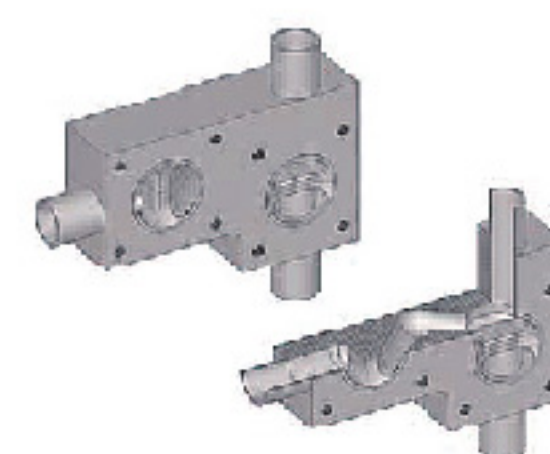
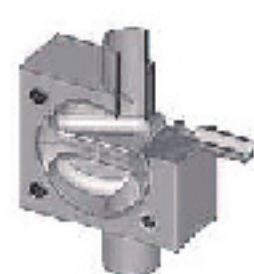
A-type

B-type

C-type

D-type

Fully integrated type





Manual Diaphragm Valve

CSE manual diaphragm valves consist of a valve body, a diaphragm and an assembled handle. These kinds of valves are specifically designed to meet the sanitary requirements for biotech application and BPE fields and also can be complying for almost related fields such as food, dairy, beverage, cosmetic and any other sanitary industrials.

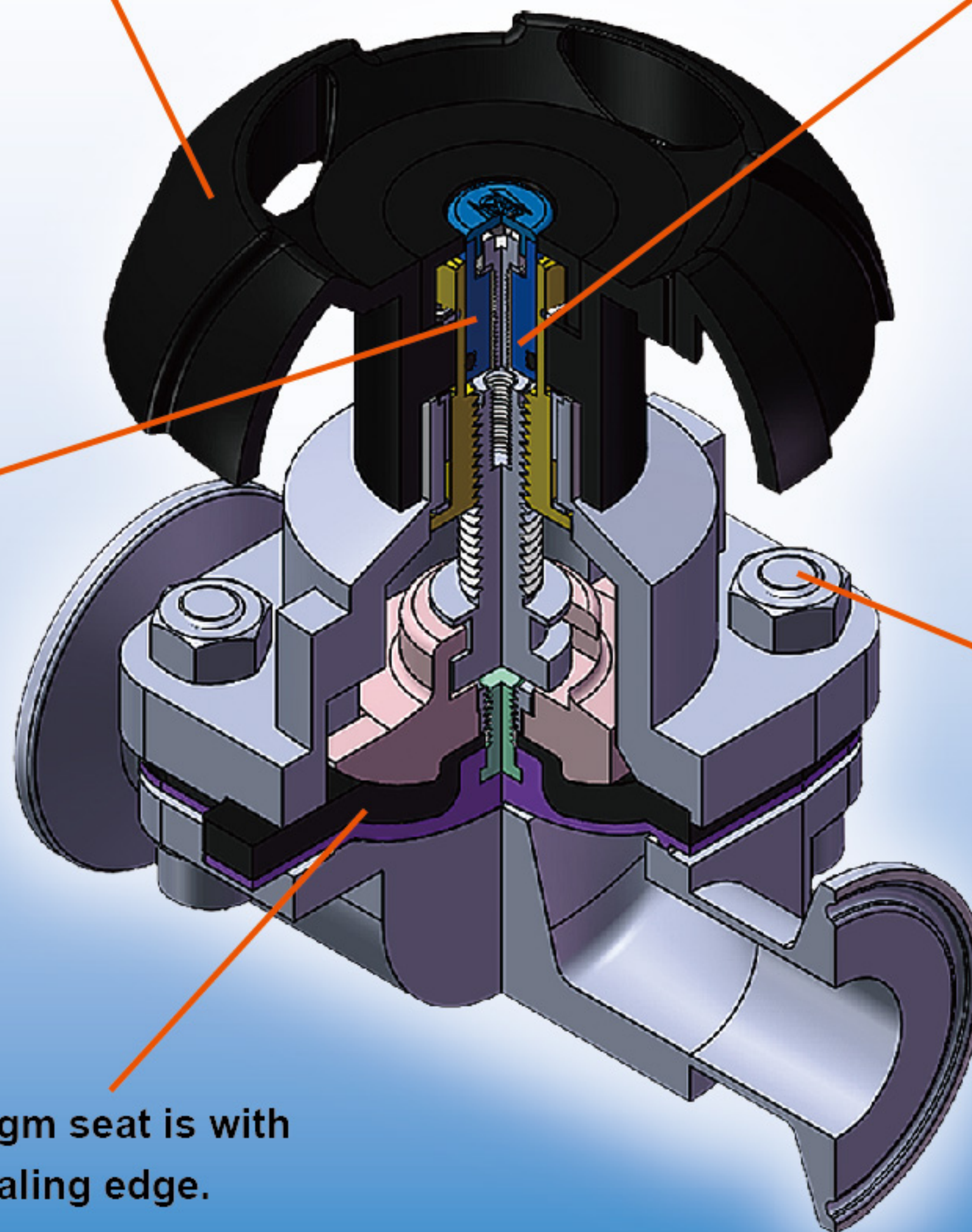
A comfortable & reliability handle design is suitable for multi valves ensuring easily operations.

O-Ring sealing

Positioning indicator

Not loose screw parts during working.

The diaphragm seat is with all-round sealing edge.





Pneumatic Diaphragm Valve

CSE quality pneumatic diaphragm valves are designed as solutions to work with remoting control of fluid setting on multi fields, it is also available for wide ranges of sizing and different country standards, and it meets almost all the requirements of aseptic of biotech & BPE and sanitary related such as food, dairy, beverage, and cosmetic so on...

