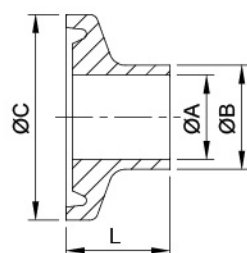
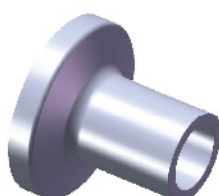
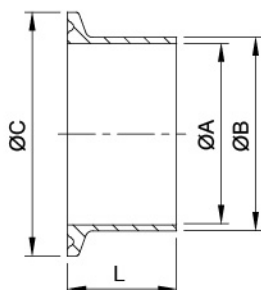
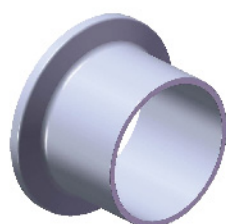


Ferrule Adapter

3A-1/2"~3/4"
SMS-DN15~DN20
DIN-DN6~DN8
DIN(ISO)-DN6~DN10



3A-1.0"~12"
SMS-DN25~DN100
DIN-DN10~DN100
DIN(ISO)-DN15~DN200



DIN(ISO) Ferrule

SIZE	ØA	ØB	ØC	L
DN6	7	10.2	25	12.7
DN8	10.3	13.5	25	12.7
DN10	14	17.2	25	12.7
DN15	18.1	21.3	50.5	21.5
DN20	23.7	26.9	50.5	21.5
DN25	29.7	33.7	50.5	21.5
DN32	38.4	42.4	64	21.5
DN40	44.3	48.3	64	21.5
DN50	56.3	60.3	77.5	28
DN65	72.1	76.1	91	28
DN80	84.3	88.9	106	28
DN100	109.7	114.3	130	28
DN125	134.5	139.7	155	28
DN150	163.1	168.3	183	28
DN200	213.9	219.1	233.5	28

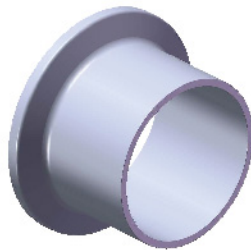
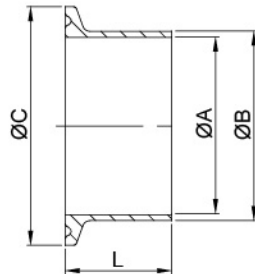
3A/SMS Welding Ferrule

SIZE	14WMP			14MMP		14AMP
	ØA	ØB	ØC	L	L	
1/4"	3.9	6.35	25	12.7	21.5	28.6
1/2"	9.4	12.7	25	12.7	21.5	28.6
DN15	9.7	12.7	25.4	12.7	21.5	28.6
3/4"	15.75	19.05	25	12.7	21.5	28.6
DN20	15.95	19.05	25.4	12.7	21.5	28.6
1"	22.1	25.4	50.5	12.7	21.5	28.6
DN25	22.5	25	50.5	12.7	21.5	28.6
1.25"	28.45	31.75	50.5	12.7	21.5	28.6
1.5"	34.8	38.1	50.5	12.7	21.5	28.6
DN38	35.5	38	50.5	12.7	21.5	28.6
2.0"	47.5	50.8	64	12.7	21.5	28.6
DN50	48.5	51	64	12.7	21.5	28.6
2.5"	60.2	63.5	77.5	12.7	21.5	28.6
DN63	60.3	63.5	77.5	12.7	21.5	28.6
DN76	72.9	76.1	91	12.7	21.5	28.6
3.0"	72.9	76.2	91	12.7	21.5	28.6
DN104	100	104	119	15.8	21.5	28.6
4.0"	97.4	101.6	119	15.8	21.5	28.6
6.0"	146.86	152.4	166.87	—	21.5	28.6 or 38.1
8.0"	197.66	203.2	217.67	—	21.5	28.6 or 38.1
10"	247.2	254	268.47	—	21.5	28.6 or 38.1
12"	298	304.8	319.27	—	21.5	28.6 or 38.1

DIN Ferrule (32676)

SIZE	DA		DB		ØC	L
	ØA	ØB	ØA	ØB		
DN6	6	8	—	—	25	12.7
DN8	8	10	—	—	25	12.7
DN10	10	13	9	12	34	18
DN15	16	19	15	18	34	18
DN20	20	23	19	22	34	18
DN25	26	29	25	28	50.5	21.5
DN32	32	35	31	34	50.5	21.5
DN40	38	41	37	40	50.5	21.5
DN50	50	53	49	52	64	21.5
DN65	66	70	66	70	91	28
DN80	81	85	81	85	106	28
DN101.6	—	—	97.6	101.6	119	28
DN100	100	104	100	104	119	28
DN125	125	129	125	129	155	28
DN150	150	154	150	154	183	28
DN200	200	204	200	204	233.5	28

Ferrule Adapter



ISO(REP) Ferrule

SIZE	ØA	ØB	ØC	L
DN8	10.3	13.5	34	28.6
DN10	14	17.2	34	28.6
DN15	18.1	21.3	34	28.6
DN20	23.7	26.9	50.5	28.6
DN25	30.5	33.7	50.5	28.6
DN32	39.2	42.4	50.5	28.6
DN40	45.1	48.3	64	28.6
DN50	56.3	60.3	77.5	28.6
DN65	72.1	76.1	91	28.6
DN80	84.3	88.9	106	28.6
DN100	109.7	114.3	130	28.6
DN125	133.7	139.7	155	28.6
DN150	162.3	168.3	183	28.6
DN200	211.1	219.1	233.5	28.6
DN250	266.3	273.1	286.1	28.6

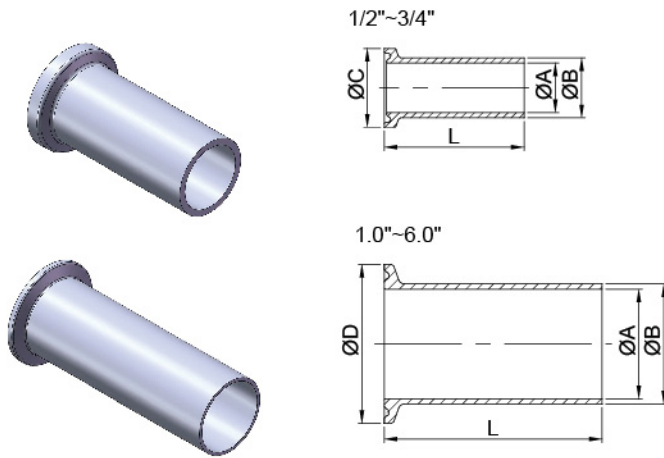
ISO-2852 Ferrule

SIZE	ØA	ØB	ØC	L
25	22.6	25.6	50.5	21.5
33.7	31.3	34.3	50.5	21.5
38	35.6	38.6	50.5	21.5
40	37.6	40.6	64	21.5
51	48.6	51.6	64	21.5
63.5	60.3	64.1	77.5	21.5
70	66.8	70.6	91	21.5
76.1	72.9	76.7	91	21.5
88.9	84.9	89.8	106	21.5
101.6	97.6	102.5	119	21.5
114.3	110.3	115.6	130	28
139.7	135.7	141.2	155	28
168.3	163.1	170	183	28
219.1	213.9	221.2	233.5	28

IDF/JIS Ferrule

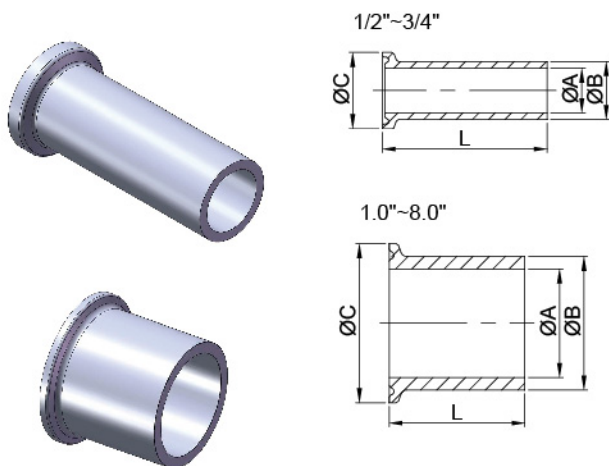
SIZE	ØA	ØB	ØC	L
1.0S	23	25.4	50.5	21.5
1.25S	29.4	31.8	50.5	17
1.5S	35.7	38.1	50.5	21.5
2.0S	47.8	50.8	64	21.5
2.5S	59.5	63.5	77.5	21.5
3.0S	72.3	76.3	91	21.5
3.5S	85.1	89.1	106	21.5
4.0S	97.6	101.6	119	28
4.5S	108.3	114.3	130	28
5.5S	133.8	139.8	165	28
6.5S	159.2	165.2	183	28

Ferrule Adapter



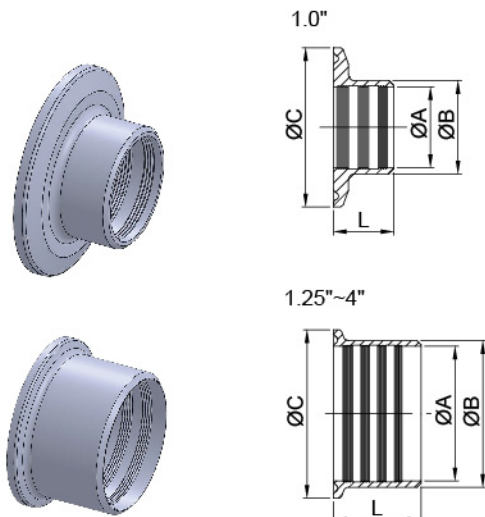
14MPHT

SIZE	ØA	ØB	ØC	L	L
1/2"	9.4	12.7	25	44.45	101.6
3/4"	15.75	19.05	25	44.45	101.6
1.0"	22.1	25.4	50.5	114.3	—
1.5"	34.8	38.1	50.5	114.3	—
2.0"	47.5	50.8	64	114.3	—
2.5"	60.2	63.5	77.5	114.3	—
3.0"	72.9	76.2	91	114.3	—
4.0"	97.4	101.6	119	117.9	—
6.0"	146.86	152.4	166.87	152.4	—



14MPW Heavy Tank Ferrule

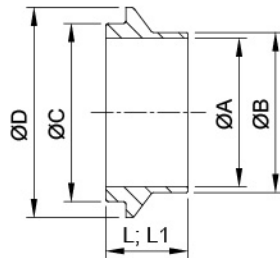
SIZE	ØA	ØB	ØC	L
1/2"	8.15	12.75	25	54
3/4"	14.6	19.05	25	54
1.0"	22.1	29.5	50.5	41.3
1.5"	34.8	42.6	50.5	41.3
2.0"	47.5	55.7	64	44.5
2.5"	60.2	68.8	77.5	44.5
3.0"	72.9	81.9	91	46.1
4.0"	97.4	108.1	119	54
6.0"	146.25	157.3	166.87	63.5
8.0"	197.05	208.1	217.67	63.5



14RMP 3A-Roll-on ferrule

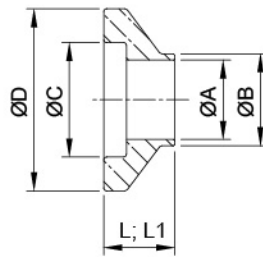
SIZE	ØA	ØB	ØC	L
1.0"	25.4	29.5	50.5	19.1
1.25"	31.75	36.3	50.5	21.5
1.5"	38.1	42.6	50.5	28.6
2.0"	50.8	55.7	64	33.3
2.5"	63.5	68.8	77.5	34.9
3.0"	76.2	81.9	91	36.5
4.0"	101.6	108.1	119	38.1

I-Line Ferrule Adapter



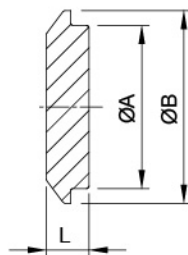
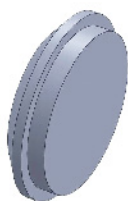
14WI I-Line Ferrule Male

SIZE	ØA	ØB	ØC	ØD	L	L1
1.0"	22.1	25.4	31.5	50.67	19.84	44.65
1.5"	34.8	38.1	44.2	50.67	23.8	51.75
2.0"	47.5	50.8	56.9	67.05	26.19	58.88
2.5"	60.2	63.5	69.6	84	29.36	63.47
3.0"	72.9	76.2	83.82	98.3	30.94	68.17
4.0"	97.4	101.6	109.14	123.7	34.11	76.17
6.0"	146.86	152.4	173.5	190.4	28.58	73.1
8.0"	197.66	203.2	224.3	241.2	28.58	73.1



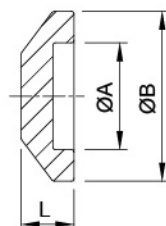
15WI I-Line Ferrule Female

SIZE	ØA	ØB	ØC	ØD	L	L1
1.0"	22.1	25.4	31.88	50.67	19.84	44.5
1.5"	34.8	38.1	44.58	50.67	23.8	51.6
2.0"	47.5	50.8	57.28	67.05	26.19	58.7
2.5"	60.2	63.5	69.98	84	29.36	63.5
3.0"	72.9	76.2	84.2	98.3	30.94	68.3
4.0"	97.4	101.6	109.6	123.7	34.11	76.2
6.0"	146.86	152.4	175.7	190.4	28.58	76.2
8.0"	197.66	203.2	226.5	241.2	28.58	76.2



16AI-14I Male I-Line End Cap

SIZE	ØA	ØB	L
1.0"	31.5	50.67	12.37
1.5"	44.2	50.67	12.37
2.0"	56.9	67.05	14.11
2.5"	69.6	84	18.72
3.0"	83.82	98.3	19.32
4.0"	109.14	123.7	19.32
6.0"	173.5	190.4	18.88
8.0"	224.3	241.2	18.88



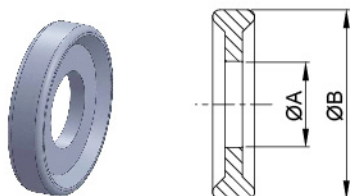
16AI-15I Female I-Line End Cap

SIZE	ØA	ØB	L
1.0"	31.88	50.67	12.75
1.5"	44.58	50.67	12.75
2.0"	57.28	67.05	17.66
2.5"	69.98	84	18.77
3.0"	84.2	98.3	19.37
4.0"	109.6	123.7	19.37
6.0"	175.7	190.4	22
8.0"	226.5	241.2	22

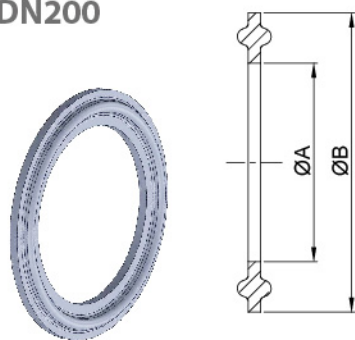
Ferrule Seal

13PG

1/2"-3/4"



1"~8"
DN10~DN200



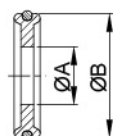
13PG (EPDM、SILICONE、VITON、PTFE)

Imperial	ØA	ØB
1/2"	9.9	21.8
3/4"	16.3	21.8
A37	19	33
1"	22.7	50
1.25"	29.5	50.5
1.5"	35.9	50
2"	48.6	63.5
2.5"	61.3	76.2
3"	74	88.9
3.5"	86	105
4"	98.6	118
4.5"	110.5	129
5"	134.7	153
6"	147.8	165
8"	198.6	216

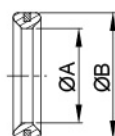
ISO(PTFE)	ØA	ØB	DIN(EPDM)	ØA	ØB
DN8	11.1	33.2	DN10	9.8	33.2
DN12	14.8	33.2	DN15	15.8	33.2
DN15	18.9	33.2	DN20	19.8	33.2
DN20	24.5	49.7	DN28	25.8	49.7
DN25	31.3	49.7	DN34	31.8	49.7
DN32	40	49.7	DN40	37.8	49.7
DN40	45.9	63.2	DN52	49.8	63.2
DN50	57.1	76.7	DN70	66.8	90.2
DN65	72.9	90.2	DN85	81.8	105.2
DN80	85.7	105.2	DN101.6	98.4	118.2
DN100	109.9	129.2	DN104	100.8	118.2
DN125	134.5	154.2	DN125	125.8	154.2
DN150	163.1	182.2	DN150	150.8	182.2
DN200	211.9	232.7	DN200	200.8	232.7

13PG(EP+PT)

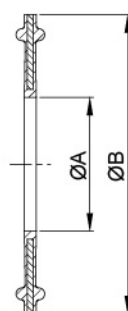
1/2"



3/4"



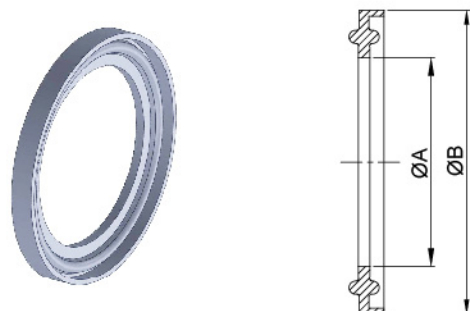
1.0"~4.0"



Imperial 13PG(EP+PT)

SIZE	ØA	ØB
1/2"	10	21.5
3/4"	16.3	21.8
1"	22.5	50.2
1.5"	34.9	50.2
2"	47.6	63.5
2.5"	60.5	77.7
3"	73.2	90.5
4"	97.7	118.4

13FG



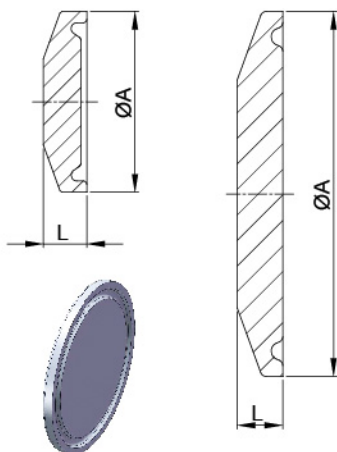
FLANGE TYPE 13FG

SIZE	ØA	ØB
1"	22.8	52.7
1.5"	35.8	52.7
2"	48.8	66.2
2.5"	60.5	79.7
3"	73.1	93.2
4"	97.8	121.2
6"	148	169.1
8"	217.9	220.1
10"	249	270.7
12"	300	321.5

Ferrule Adapter

1/2"~3/4"
DIN6~DIN8

A37~12"
DIN10~DIN200
ISO(REP)



Imperial 16AMP

SIZE	ØA	L
1/2"	25	6
3/4"	25	6
A37	34	6.3
1.0"	50.5	6.3
1.5"	50.5	6.3
2.0"	64	6.3
2.5"	77.5	6.3
3.0"	91	6.3
3.5"	106	6.3
4.0"	119	7.9
6.0"	166.87	11.1
8.0"	217.67	11.1
10"	268.47	11.1
12"	319.27	11.1

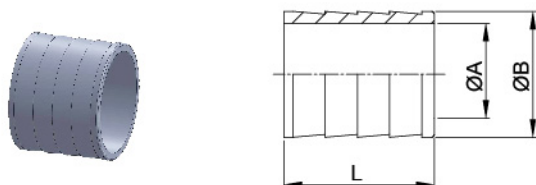
DIN 16AMP

SIZE	ØA	L
DN6	25	4.75
DN8	25	4.75
DN10	34	6.35
DN15	34	6.35
DN20	34	6.35
DN25	50.5	6.35
DN32	50.5	6.35
DN40	50.5	6.35
DN50	64	6.35
DN65	91	6.35
DN80	106	6.35
DN100	119	8
DN125	155	8
DN150	183	11.1
DN200	233.5	11.1

ISO(REP) 16AMP

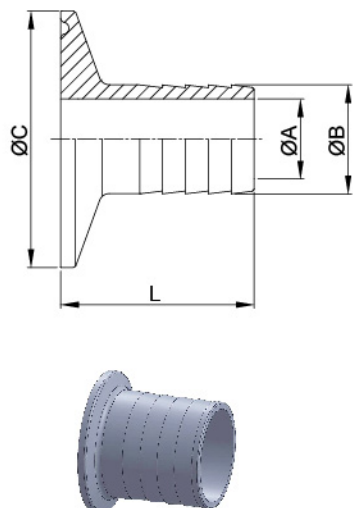
SIZE	ØA	L
DN8	34	6.3
DN12	34	6.3
DN15	34	6.3
DN20	50.5	6.3
DN25	50.5	6.3
DN32	50.5	6.3
DN40	64	6.3
DN50	77.5	6.3
DN65	91	6.3
DN80	106	6.3
DN100	130	7.9
DN125	155	7.9
DN150	183	11.1
DN200	233.5	11.1

14WHR HOSE ADAPTER



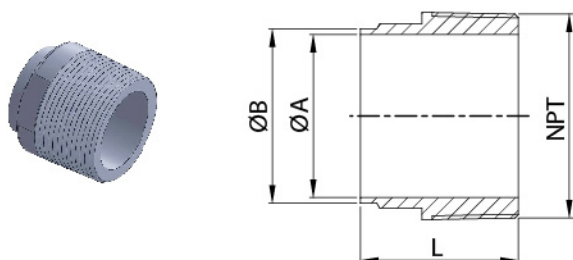
SIZE	ØA	ØB	ØC	L
1/2"	9.5	13.7	25.2	25.3
3/4"	15.8	21.4	25.2	25.3
1.0"	20.6	25.4	50.5	30.3
1.5"	33.2	38.1	50.5	30.3
2.0"	46	50.8	64	46
2.5"	58.7	63.5	77.5	46.8
3.0"	72	76.2	91	65.9
4.0"	97.6	101.6	119	72.8

14MPHR HOSE ADAPTER



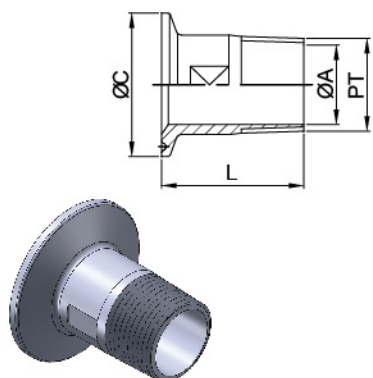
SIZE	ØA	ØB	ØC	L
1/2"~1/4"	3.175	7.3	25.2	38
1/2"~3/8"	6.35	10.4	25.2	38
1/2"~1/2"	9.5	13.7	25.2	38
1/2"~5/8"	12.7	16.8	25.2	38
3/4"~1/4"	3.175	7.3	25.2	38
3/4"~3/8"	6.35	10.4	25.2	38
3/4"~1/2"	9.5	13.7	25.2	38
3/4"~5/8"	12.7	16.8	25.2	38
3/4"~3/4"	15.8	21.4	25.2	38
1.0"~1/4"	3.175	7.3	50.5	38
1.0"~3/8"	6.35	10.4	50.5	38
1.0"~1/2"	9.5	13.7	50.5	38
1.0"~5/8"	12.7	16.8	50.5	38
1.0"~3/4"	15.8	21.4	50.5	38
1.0"~1.0"	20.6	25.4	50.5	43
1.5"~3/8"	6.35	10.4	50.5	38
1.5"~1/2"	9.5	13.7	50.5	38
1.5"~5/8"	12.7	16.8	50.5	38
1.5"~3/4"	15.8	21.4	50.5	38
1.5"~1.0"	20.6	25.4	50.5	43
1.5"~1.25"	26.8	31.75	50.5	43
1.5"~1.5"	33.2	38.1	50.5	43
2.0"~1.25"	26.8	31.75	64	43
2.0"~1.5"	33.2	38.1	64	43
2.0"~2.0"	46	50.8	64	58.7
2.5"~2.5"	58.7	63.5	77.5	59.5
3.0"~3.0"	72	76.2	91	78.6
4.0"~4.0"	97.6	101.6	119	85.5

Ferrule Adapter



19W thread male

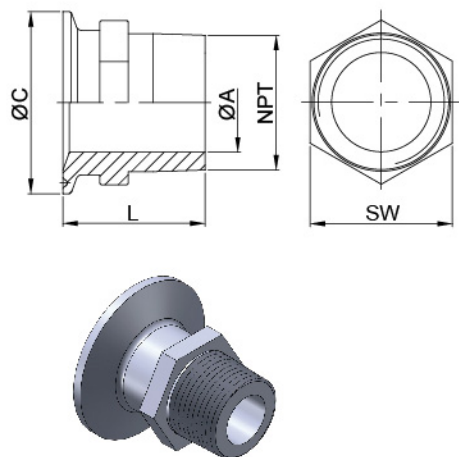
SIZE	ØA	ØB	NPT	L
1/2"	9.4	12.7	1/2"	41.3
3/4"	15.75	19.05	3/4"	41.3
1.0"	22.1	25.4	1.0	44.5
1.5"	34.8	38.1	1.5"	44.5
2.0"	47.5	50.8	2.0"	46
2.5"	60.2	63.5	2.5"	58.7
3.0"	72.9	76.2	3.0"	63.5
4.0"	97.4	101.6	4.0"	65.1
6.0"	146.9	152.4	6.0	76.2



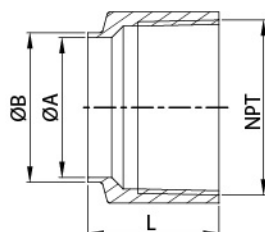
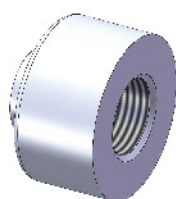
21MP(Plain milling)

SIZE	ØA	ØC	PT	L
1.0"&1.5"*1/4"	8.56	50.5	1/4"	40
1.0"&1.5"*3/8"	12.7	50.5	3/8"	40
1.0"&1.5"*1/2"	15.5	50.5	1/2"	45
1.0"&1.5"*3/4"	21.3	50.5	3/4"	45
1"&1.5"*1.0"	28	50.5	1.0"	50
1.0"&1.5"*1 1/4"	34.8	50.5	1 1/4"	50
2.0"*1.0"	28	64	1.0"	50
2.0"*1 1/4"	35.7	64	1 1/4"	50
2.0"*1.5"	41.8	64	1 1/2"	50
2.0"*2.0"	47.5	64	2.0"	54.7

21MP(Hexagon)



SIZE	ØA	ØC	NPT	L	SW	SIZE	ØA	ØC	NPT	L	SW
1/2"*1/2"	9.5	25	1/2"	45	24	2.0"*3.0"	73	64	3.0"	70	90
3/4"*1/4"	7.95	25	1/4"	45	24	2.0"*4.0"	97.6	64	4.0"	75	115
3/4"*1/2"	15.8	25	1/2"	45	24	2.5"*1.0"	22.2	77.5	1.0"	50	75
3/4"*3/4"	15.8	25	3/4"	45	30	2.5"*1.5"	34.9	77.5	1.5"	50	75
1.0"&1.5"*1/4"	3.18	50.5	1/4"	40	17	2.5"*2.0"	47.6	77.5	2.0"	55	75
1.0"&1.5"*3/8"	6.35	50.5	3/8"	40	19	2.5"*2.5"	60.3	77.5	2.5"	60	75
1.0"&1.5"*1/2"	9.5	50.5	1/2"	40	24	2.5"*3.0"	73	77.5	3.0"	70	90
1.0"&1.5"*3/4"	15.8	50.5	3/4"	45	32	2.5"*4.0"	97.6	77.5	4.0"	75	115
1"&1.5"*1.0"	22.2	50.5	1.0"	50	35	3.0"*1.0"	22.2	91	1.0"	55	90
1.0"&1.5"*1 1/4"	28.6	50.5	1 1/4"	50	50	3.0"*1.5"	34.9	91	1.5"	55	90
1.0"&1.5"*1.5"	34.9	50.5	1.5"	50	50	3.0"*2.0"	47.6	91	2.0"	55	90
1.0"&1.5"*2.0"	47.6	50.5	2.0"	55	65	3.0"*2.5"	60.3	91	2.5"	60	90
2.0"*1/4"	3.18	64	1/4"	40	50	3.0"*3.0"	73	91	3.0"	70	90
2.0"*3/8"	6.35	64	3/8"	40	50	3.0"*4.0"	97.6	91	4.0"	75	90
2.0"*1/2"	9.5	64	1/2"	40	50	4.0"*1.0"	22.2	119	1.0"	55	115
2.0"*3/4"	15.8	64	3/4"	50	50	4.0"*1.5"	34.9	119	1.5"	55	115
2.0"*1.0"	22.2	64	1.0"	50	50	4.0"*2.0"	47.6	119	2.0"	55	115
2.0"*1.5"	34.9	64	1.5"	50	50	4.0"*2.5"	60.3	119	2.5"	60	115
2.0"*2.0"	47.6	64	2.0"	55	65	4.0"*3.0"	73	119	3.0"	70	115
2.0"*2.5"	60.3	64	2.5"	60	65	4.0"*4.0"	97.6	119	4.0"	75	115

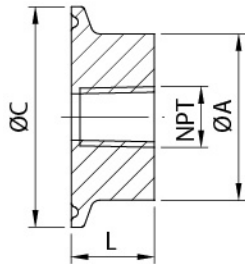


22W thread female

SIZE	ØA	ØB	NPT	L
1.0"	22.1	25.4	1.0"	34.9
1.5"	34.8	38.1	1.5"	33.4
2.0"	47.5	50.8	2.0"	44.5
2.5"	60.2	63.5	2.5"	46.1
3.0"	72.9	76.2	3.0"	57.2
4.0"	97.4	101.6	4.0"	60.3

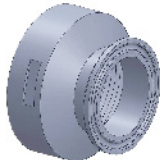
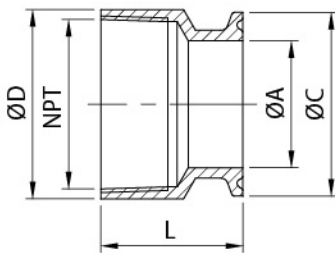
Ferrule Adapter

22MP



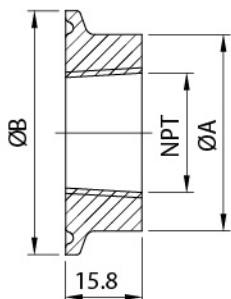
SIZE	ØA	ØC	L	NPT	SIZE	ØA	ØC	L	NPT
1.0"×1.5"×1/4"	38.1	50.5	19	1/4"	2.5"×1.0"	63.5	77.5	35	1.0"
1.0"×1.5"×3/8"	38.1	50.5	19	3/8"	2.5"×1.5"	63.5	77.5	35	1.5"
1.0"×1.5"×1/2"	38.1	50.5	19	1/2"	2.5"×2.0"	65	77.5	35	2.0"
1.0"×1.5"×3/4"	38.1	50.5	19	3/4"	3.0"×1.0"	76.2	91	35	1.0"
1.0"×1.5"×1.0"	40	50.5	19	1.0"	3.0"×1.5"	76.2	91	35	1.5"
2.0"×1/4"	50.8	64	19	1/4"	3.0"×2.0"	76.2	91	35	2.0"
2.0"×3/8"	50.8	64	19	3/8"	4.0"×1.0"	101.6	119	35	1.0"
2.0"×1/2"	50.8	64	19	1/2"	4.0"×1.5"	101.6	119	35	1.5"
2.0"×3/4"	50.8	64	19	3/4"	4.0"×2.0"	101.6	119	35	2.0"
2.0"×1.0"	50.8	64	19	1.0"	4.0"×2.5"	101.6	119	35	2.5"
2.0"×1.5"	53	64	19	1.5"	4.0"×3.0"	101.6	119	35	3.0"

22MP



SIZE	ØA		ØC	ØD	NPT	L
	1.0"	1.5"				
1/2"×1/4"	9.5		25	30	1/4"	33
1/2"×1/2"	9.5		25	30	1/2"	33
3/4"×1/2"	15.75		25	30	1/2"	38.1
3/4"×3/4"	15.8		25	31	3/4"	33
1.0"×1.5"×1.25"	22.2	34.9	50.5	52	1.25"	39
1.0"×1.5"×1.5"	22.2	34.9	50.5	54	1.5"	39
1.0"×1.5"×2.0"	22.2	34.9	50.5	65	2.0"	40
2.0"×2.0"	47.6		64	65	2.0"	40
2.5"×2.5"	60.3		77.5	80	2.5"	50
3.0"×2.5"	73		91	95	2.5"	50
3.0"×3.0"	73		91	95	3.0"	52
4.0"×4.0"	97.6		119	120	4.0"	54

23BMP



SIZE	ØA	ØB	NPT	SIZE	ØA	ØB	NPT
1.0"×1/8"	25.4	50.5	1/8"	2.5"×1/2"	63.5	77.5	1/2"
1.0"×1/4"	25.4	50.5	1/4"	2.5"×3/4"	63.5	77.5	3/4"
1.0"×3/8"	25.4	50.5	3/8"	2.5"×1.0"	63.5	77.5	1.0"
1.0"×1/2"	25.4	50.5	1/2"	2.5"×1.5"	63.5	77.5	1.5"
1.5"×1/8"	38.1	50.5	1/8"	2.5"×2.0"	63.5	77.5	2.0"
1.5"×1/4"	38.1	50.5	1/4"	3.0"×1/2"	76.2	91	1/2"
1.5"×3/8"	38.1	50.5	3/8"	3.0"×3/4"	76.2	91	3/4"
1.5"×1/2"	38.1	50.5	1/2"	3.0"×1.0"	76.2	91	1.0"
1.5"×3/4"	38.1	50.5	3/4"	3.0"×1.5"	76.2	91	1.5"
1.5"×1.0"	38.1	50.5	1.0"	3.0"×2.0"	76.2	91	2.0"
2.0"×1/2"	50.8	64	1/2"	4.0"×3/4"	101.6	119	3/4"
2.0"×3/4"	50.8	64	3/4"	4.0"×1.0"	101.6	119	1.0"
2.0"×1.0"	50.8	64	1.0"	4.0"×1.5"	101.6	119	1.5"
2.0"×1.5"	50.8	64	1.5"	4.0"×2.0"	101.6	119	2.0"
				4.0"×2.5"	101.6	119	2.5"
				4.0"×3.0"	101.6	119	3.0"