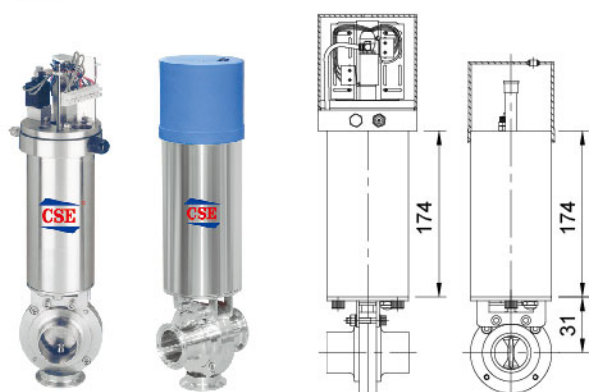


CSE Auto Control Actuator For Butterfly Valve

C2, C3 actuator instruction

1. C2, C3: Shut-Off time: 1.5 second ; Weight: 3.85KGS.
C101: Shut-Off time: 1.7 second ; Weight: 7.1KGS
2. Operating air pressure: 6 kg/cm₂ ; Min. 5bar ; Max. 9bar compress air
3. C2, C3 Air consumption: 0.266 Liter at 5 bar ; C101 Air consumption: 0.550 Liter at 5 bar.
4. Material: stainless steel AISI 304
5. Can be equipped with normal close or open.

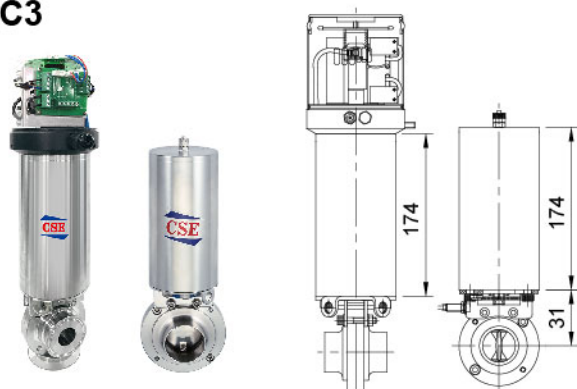
C2



Operation instruction

1. C2 Actuator apply to butterfly valve in size 1"-3" of the disc head DIA. 12mm X 8mm.(other size can be required)
2. Control ways:
 - 2-1. Signal transfer:
 - a.With 10-30VDC proximity switch contact: 1 or 2pcs.
 - b.Or 3A 125VAC. 30VDC microswitch: 2pcs
 - 2-2 Individual control: Choice (a) or (b) + DC24 3.0W electric valve: 1pc & Air manifold (for complete control box).
3. Air/Air (double effect) actuator or air/spring (simple effect) actuator are available.
4. Accessories: adapter: 1pcs ; M6 X 35 screw: 2pcs ; washer: 4pcs ; M6 nut: 2pcs ; 1/8PT quick coupler: 1pcs

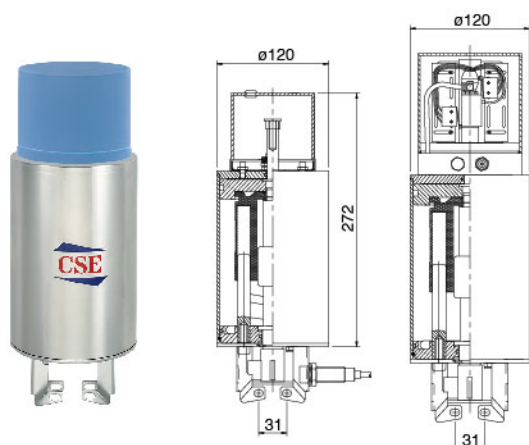
C3



Operation instruction

1. C3 Actuator apply to butterfly valve in size 1"-3" of the disc head DIA. 12mm X 8mm. (other size can be required)
2. Signal transfer: can be connect with M12 screw proximity switch.
3. Air/Air (double effect) actuator or air/spring (simple effect) actuator are available.
4. Accessories: adapter: 1pc ; M6 X 35 screw: 2pcs ; washer: 4pcs ; M6 nut: 2pcs ; 1/8PT quick coupler: 1pc

C101



Operation instruction

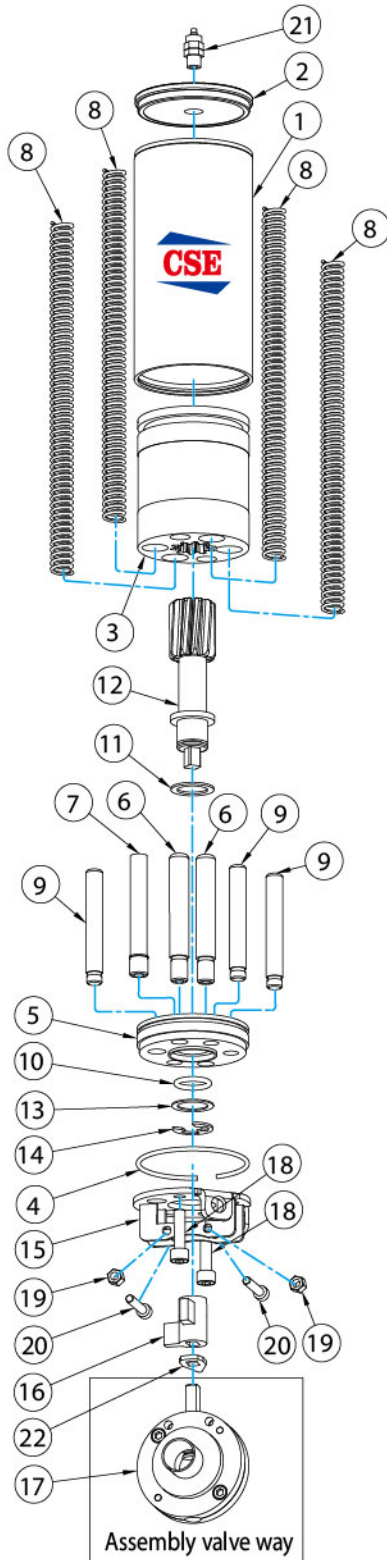
1. C101 Actuator apply to butterfly valve in size 4"-6" of the disc head DIA. 12mm X 12mm.
2. Control ways:
 - 2-1. Signal transfer:
 - a.Can be connect with M18 or M12 screw proximity switch (PNP or NPN) as (1)
 - b.With 10-30 VDC proximity switch contact: 1 or 2pcs (PNP OR NPN)
 - c.Or 3A 125VAC. 30VDC microswitch: 2pcs
 - 2-2. Individual control: Choice (a) or (b) or (c) + DC24 3.0W electric valve: 1pc & air manifold (for complete control box).
3. Air/Air (double effect) actuator or air/spring (simple effect) actuator are available.
4. Accessories: adapter: 1pcs ; M6 X 40 screw: 2pcs ; washer: 4pcs ; M6 nut: 2pcs ; 1/8PT quick coupler: 1pcs

CSE Auto Control Actuator for Butterfly Valve (Warn Gear Design)

C3# Type construction assembly drawing & items list

Max. output torque 20N/M on C2 & C3#

Max. output torque 30N/M on C101



Parts List

Item	Parts name	Q'TY	Material
1	St. St. cylinder	1	St. St. 304
2	St. St. cylinder	1	St. St. 304
3	Piston stem	1	Tenac 4010/SH410
4	Lock wire clip	1	St. St. 304
5	Lower cylinder end	1	St. St. 304
6	Piston guide part	2	St. St. 304
7	Piston guide part	1	St. St. 304
8	Compress spring	4	St. St. 304
9	Piston guide part	3	St. St. 304
10	Piston axle O-ring	1	Teflon
11	Teflon gasket	1	Teflon
12	Coupling axle piece	1	St. St. 304
13	Contact seal	1	St. St. 304
14	Circlip	1	St. St. 304
15	Mounting bracket	1	St. St. 304
16	Connection piece	1	St. St. 304
17	Assembly valve way	1	St. St. 304/316(L)
18	M8x12 ST.ST. screw	2	St. St. 304
19	M6 Nut	2	St. St. 304
20	M6x35 ST.ST. screw	2	St. St. 304
21	Air connection	1	Copper
22	Positioning index	1	St. St. 304

CSE Control Box for Auto Actuator and Divert Valve

C2 & C101

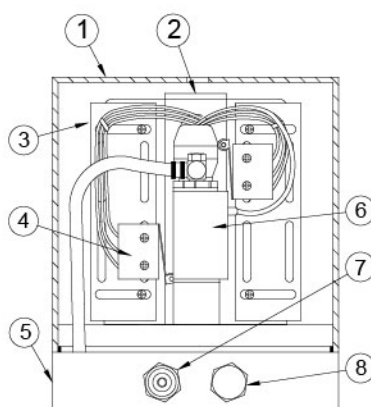
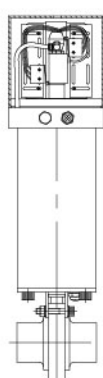


C2-LED



can be reused

Control box construction assembly drawing & items list



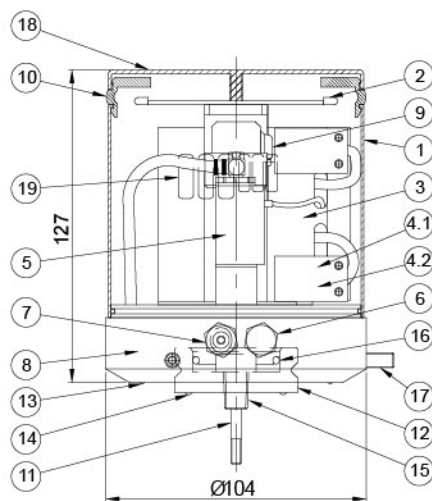
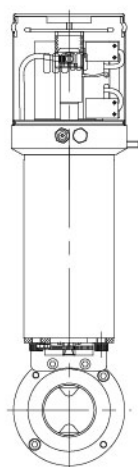
Parts List

Item	Parts name	Q'TY	Material
1	Cover	1	PC or St.St 304
2	Switch plate	1	St.St 304
3	Plastic hanger	2	St.St 304
4	Micro switch	2	3A 125VAC. 30VDC
5	Air manifold	1	P.O.M (Plastic) or St.St 304
6	Electrovalve	1	DC24 3.0W
7	Air connection	1	Cu
8	E/N connect	1	St.St 304

C3-LED



can be reused



Parts List

Item	Parts name	Q'TY	Material
1	Cover	1	St.St 304
2	LED Light	1	
3	Switch bracket	1	St.St 304
4.1	Proximity sensor	2	3A 125VAC. 30VDC
4.2	Mirco switch	2	3A 125VAC. 30VDC
5	Electrovalve	1	DC24 3.0W AC110V AC220V
6	E/N connect piece	1	St.St 304
7	Air connection	1	Cu
8	Air manifold	1	P.O.M St.St 304
9	Contact head	1	St.St 304
10	Light screen	1	PC
11	Senser pin	1	St.St 304
12	Plate	1	St.St 304
13	O-Ring	1	NBR
14	O-Ring	1	NBR
15	Adapter (3/8" NPT)	1	St.St 304
16	O-Ring	1	NBR
17	Set screw	3	St.St 304
18	Top cover	1	St.St 304/PE
19	PCB board	1	