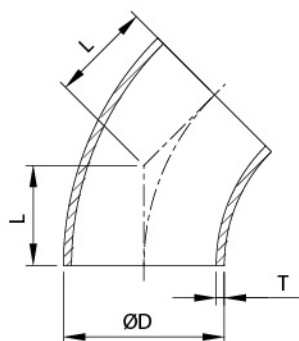
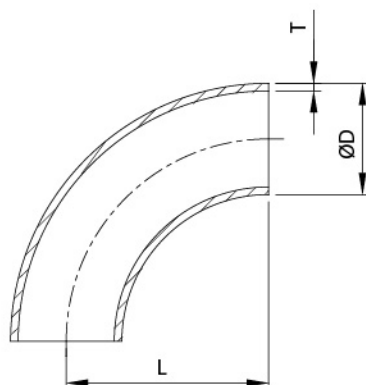


## DIN Tubular Items



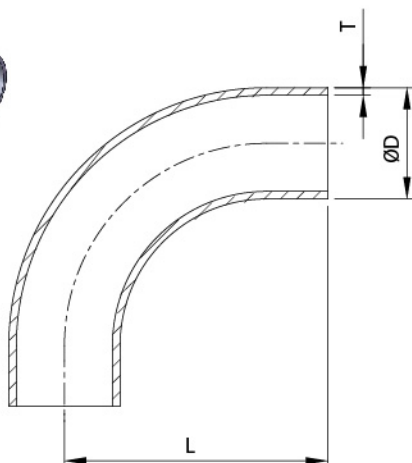
### 2WK SHORT 45° ELBOW

SIZE	ØD	L	T
DN10	12/13	10.77	1.5
DN15	18/19	14.5	1.5
DN20	22/23	16.6	1.5
DN25	28/29	20.7	1.5
DN32	34/35	22.8	1.5
DN40	40/41	24.9	1.5
DN50	52/53	29	1.5
DN65	70	33.1	2
DN80	85	37.3	2
DN100	104	41.4	2
DN125	129	77.67	2
DN150	154	93.2	2
DN200	204	124.26	2
DN250	254	155.33	2
DN300	306	186.4	3



### 2WCL SHORT 90° ELBOW

SIZE	ØD	L	T
DN10	12/13	26	1.5
DN15	18/19	35	1.5
DN20	22/23	40	1.5
DN25	28/29	50	1.5
DN32	34/35	55	1.5
DN40	40/41	60	1.5
DN50	52/53	70	1.5
DN65	70	80	2
DN80	85	90	2
DN100	101.6	152.4	2
DN100	104	100	2
DN125	129	187.5	2
DN150	154	225	2
DN200	204	300	2
DN250	254	375	2
DN300	306	450	3

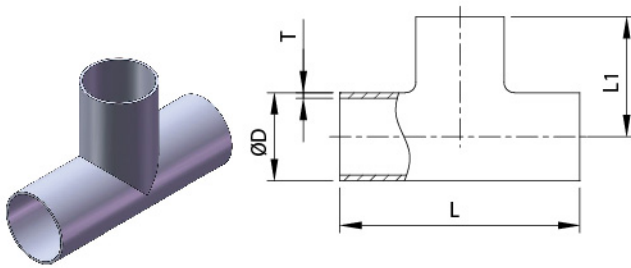


### L2S LONG 90° ELBOW

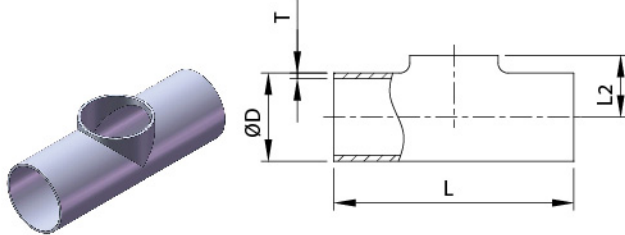
SIZE	ØD	L	T
DN10	12/13	51	1.5
DN15	18/19	60	1.5
DN20	22/23	52	1.5
DN25	28/29	65	1.5
DN32	34/35	73	1.5
DN40	40/41	80	1.5
DN50	52/53	92	1.5
DN65	70	105	2
DN80	85	119	2
DN100	101.6	175	2
DN100	104	140	2
DN125	129	251	2
DN150	154	288.5	2
DN200	204	363.5	2
DN250	254	451.2	2
DN300	306	526.2	3

## DIN Tubular Items

7W



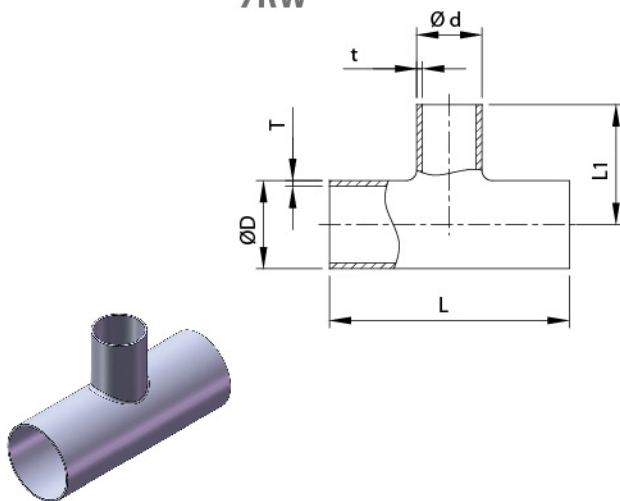
7WO



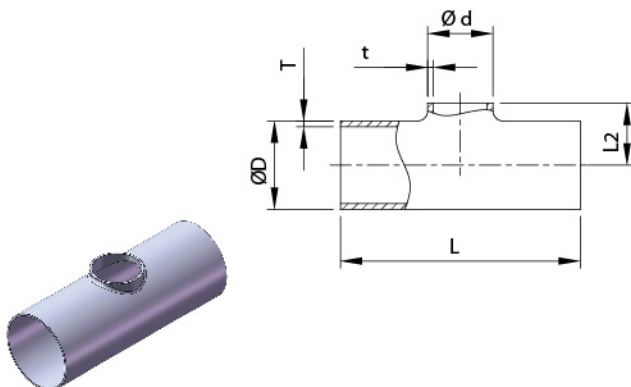
### TEE & PULL TEE

SIZE	ØD	L	L1	L2	T
DN10	12/13	52	26	11	1.5
DN15	18/19	70	35	11	1.5
DN20	22/23	80	40	13	1.5
DN25	28/29	100	50	16	1.5
DN32	34/35	110	55	19.5	1.5
DN40	40/41	120	60	23	1.5
DN50	52/53	140	70	30	1.5
DN65	70	160	80	40	2
DN80	85	180	90	47.5	2
DN100	101.6	300	150	56	2
	104	200	100	58	2
DN125	129	375	187.5	74	2
DN150	154	450	225	90	2
DN200	204	600	300	115	2
DN250	254	600	300	140	2
DN300	306	600	300	166	3

7RW



7RWO

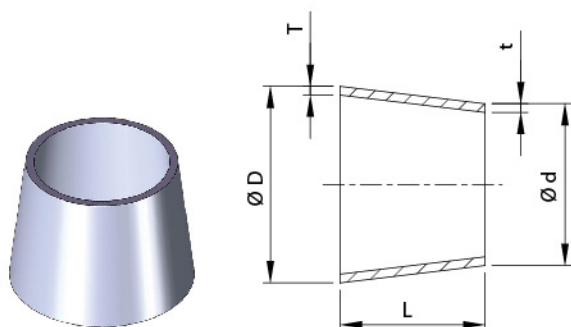


### REDUCING TEE & REDUCING PULL TEE

SIZE	ØD	Ød	L	L1	L2	T	t
15*10	18/19	12/13	70	29	10.5	1.5	1.5
20*10	22/23	12/13	80	31	12.5	1.5	1.5
20*15	22/23	18/19	80	37	13	1.5	1.5
25*15	28/29	18/19	100	40	16	1.5	1.5
25*20	28/29	22/23	100	43	16	1.5	1.5
32*15	34/35	18/19	110	43	19	1.5	1.5
32*20	34/35	22/23	110	46	19	1.5	1.5
32*25	34/35	28/29	110	53	19	1.5	1.5
40*20	40/41	22/23	120	49	22	1.5	1.5
40*25	40/41	28/29	120	56	22	1.5	1.5
40*32	40/41	34/35	120	58	22.5	1.5	1.5
50*25	52/53	28/29	140	62	28	1.5	1.5
50*32	52/53	34/35	140	64	28.5	1.5	1.5
50*40	52/53	40/41	140	66	29	1.5	1.5
65*32	70	34/35	160	72.5	37	2	1.5
65*40	70	40/41	160	74.5	37.5	2	1.5
65*50	70	52/53	160	78.5	38.5	2	1.5
80*40	85	40/41	180	82	45	2	1.5
80*50	85	52/53	180	86	46	2	1.5
80*65	85	70	180	87.5	47.5	2	2
100*50	104	52/53	200	95.5	55.5	2	1.5
100*65	104	70	200	97	57	2	2
100*80	104	85	200	99.5	57	2	2
125*65	129	70	375	109.5	69.5	2	2
125*80	129	85	375	112	69.5	2	2
125*100	129	104	375	112.5	70.5	2	2
150*80	154	85	450	124.5	82	2	2
150*100	154	104	450	125	83	2	2
150*125	154	129	450	200	86.5	2	2
200*100	204	104	600	150	108	2	2
200*125	204	129	600	225	111.5	2	2
200*150	204	154	600	250	115	2	2

## DIN Tubular Items

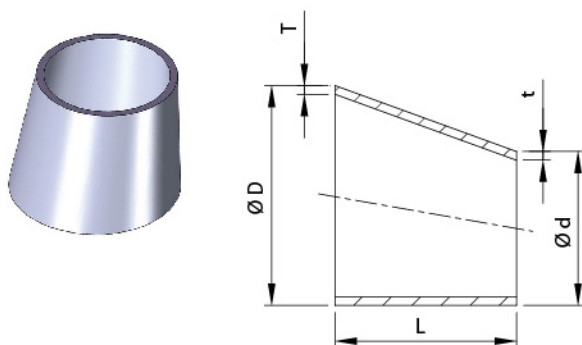
L31



### CONCENTRIC REDUCER

SIZE	ØD	Ød	L	T	t
15*10	18/19	12/13	11	1.5	1.5
20*10	22/23	12/13	18	1.5	1.5
20*15	22/23	18/19	7	1.5	1.5
25*15	28/29	18/19	18	1.5	1.5
25*20	28/29	22/23	11	1.5	1.5
32*20	34/35	22/23	22	1.5	1.5
32*25	34/35	28/29	25	1.5	1.5
40*20	40/41	22/23	33	1.5	1.5
40*25	40/41	28/29	23	1.5	1.5
40*32	40/41	34/35	23	1.5	1.5
50*25	52/53	28/29	27	1.5	1.5
50*32	52/53	34/35	28	1.5	1.5
50*40	52/53	40/41	27	1.5	1.5
65*25	70	28/29	35	2	1.5
65*40	70	40/41	39	2	1.5
65*50	70	52/53	29	2	1.5
80*50	85	52/53	45	2	1.5
80*65	85	70	33	2	2
100*50	104	52/53	50	2	1.5
100*65	104	70	44	2	2
100*80	104	85	60	2	2
125*80	129	85	79	2	2
125*100	129	104	45	2	2
150*100	154	104	90	2	2
150*125	154	129	45	2	2
200*150	204	154	90	2	2

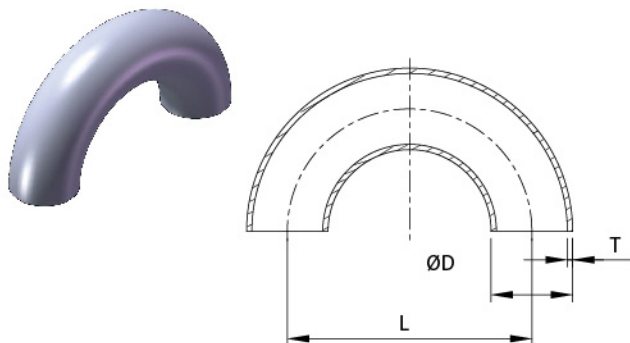
L32



### ECCENTRIC REDUCER

SIZE	ØD	Ød	L	T	t
32*25	34/35	28/29	16.5	1.5	1.5
40*25	40/41	28/29	33	1.5	1.5
40*32	40/41	34/35	16.5	1.5	1.5
50*25	52/53	28/29	66	1.5	1.5
50*32	52/53	34/35	49.5	1.5	1.5
50*40	52/53	40/41	33	1.5	1.5
65*40	70	40/41	77	2	1.5
65*50	70	52/53	44	2	1.5
80*50	85	52/53	85	2	1.5
80*65	85	70	41.2	2	2
100*50	104	52/53	137.5	2	1.5
100*65	104	70	93.5	2	2
100*80	104	85	52.5	2	2

### 180° WELD ELBOW



SIZE	ØD	L	T
DN10	12/13	52	1.5
DN15	18/19	70	1.5
DN20	22/23	80	1.5
DN25	28/29	100	1.5
DN32	34/35	110	1.5
DN40	40/41	120	1.5
DN50	52/53	140	1.5
DN65	70	160	2
DN80	85	180	2
DN100	104	200	2
DN125	129	375	2