

2WAY & 3WAY Plug Valves

Dairy



Plug Cock Valve are excellent hygienic design. Base on Taper and not any gasket in flow port. So, big popular use on the Milk industry.

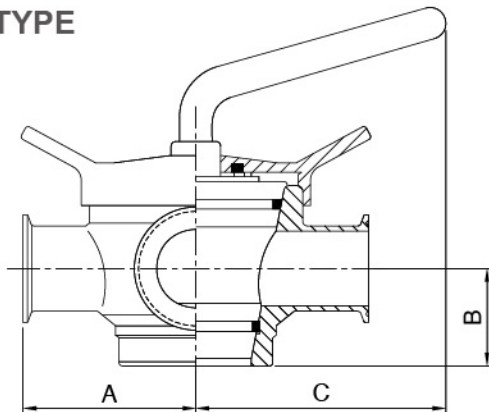
CSE Plug Cock combinec European and USA design, using pure materials and excellent processing technologically.

Material Plug- SS304 or SS316L with hard / thick chrome coation for long-term kecyling and easy clean maintenance

Connect - Weld, Clamp and Male End.

Max. Work pressure - 3 Bars~10 Bars.

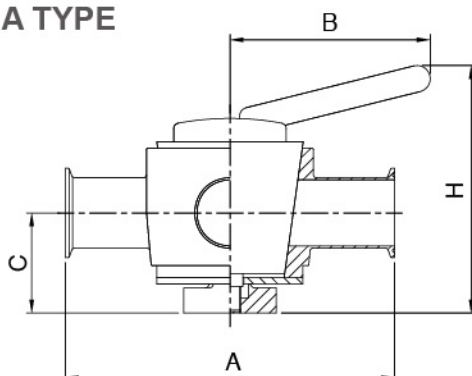
E TYPE



2WAY & 3WAY-PLUG VALVE for Weld/- Male/Female/Clamp

SIZE (Tube O.D)	Weld A	Male A	Clamp A	B	C
DN25 - 1"	66.3	95.3	94.9	26	139.19
DN40 - 1.5"	85.1	118.1	113.7	35	139.19
DN50 - 2"	114.2	149.2	142.8	45	143.01
DN65 - 2.5"	132.0	172.0	160.6	55	143.69
DN80 - 3"	168.6	213.6	197.2	70	143.81
DN100 - 4"	206.3	260.3	234.9	75	174.21

A TYPE



2WAY & 3WAY-PLUG VALVE for Weld/- Male/Female/Clamp

SIZE (Tube O.D)	Weld A	Clamp A	B	C	H
1"	184.2	115.9	117.0	58.3	128.4
1.5"	198.4	147.6	142.7	61.0	164.4
2"	223.8	173.0	144.2	72.4	178.0
2.5"	260.4	209.6	150.6	86.2	223.4
3"	290.5	239.7	180.7	90.6	241.4