

# CSE Manual and Auto Control Tank Valve

## Materials:

- Flow area: AISI 316L
- Other steel parts: AISI 304
- Plug stem: AISI 316L with chromium plated surface
- Gasket for flow area: EPDM/ FKM/ PTFE
- Other seals: NBR and EPDM
- OD Surface: Mirror/ satin /sand Blasted

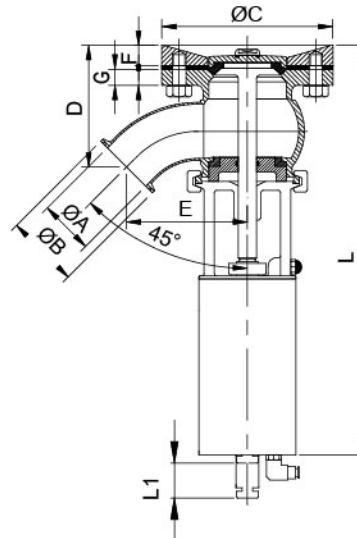
## Technical data:

- Max. production pressure :1000kpa(10bar).
- Temperature range: -10°C to +104°C(EPDM).

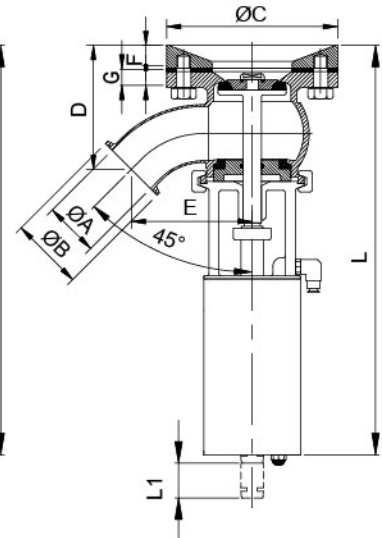
SIZE	1.0"	1.5"	2.0"	2.5"	3.0"
ØA	22.1	34.8	47.5	60.2	72.9
ØB	50.5	50.5	64	77.5	91
ØC	110	140	150	180	200
D	56.8	95.1	106.5	124.7	137.5
E	65.8	93	106	125.5	149.5
F	14	20	20	20	20
G	10	14	14	14	14
L	190	354	360	446	450
L1	22	31	31	39	39
L2	94	122	127	158	164
L3	30	35	35	45	45



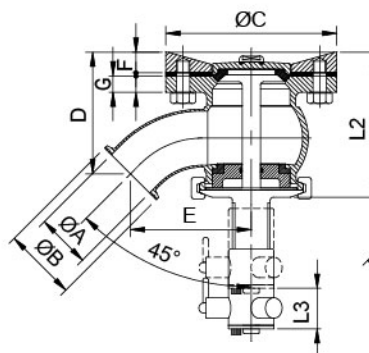
Auto : Up to open



Up to close



Manual : Up to open



Up to close

